

**TEUPEN**<sup>®</sup>  
...access redefined

since '77







OUR NEW "plus"  
PRODUCT LINE

400 kg platform capacity

**WINNER**  
**ALH**  
ACCESS, LIFT & HANDLERS  
**AWARDS 2019**  
**WINNER**

**Product Innovation –**  
**MEWPS Over 20 Feet**  
**TEUPEN North America**  
**LE092SJ PLUS**

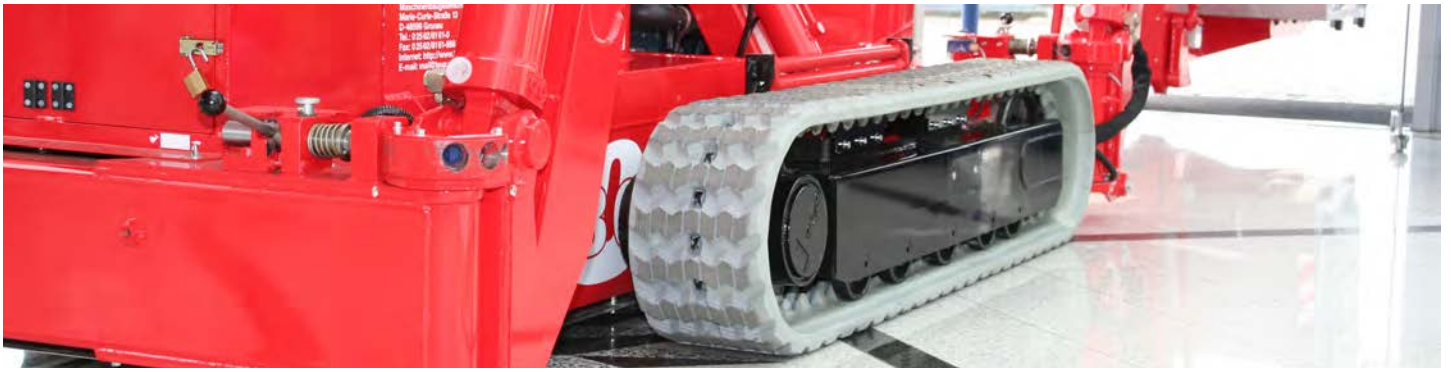


## MORE THAN JUST HEIGHT

Difficult access, delicate floorings or limited floor load capacities.

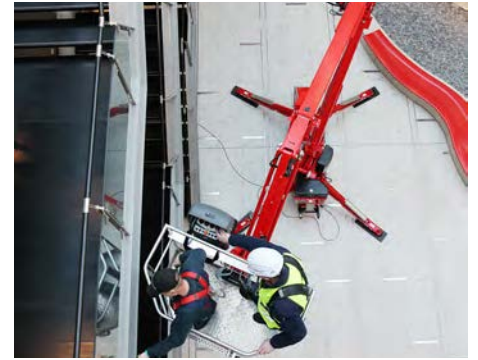
In complex height access applications the TEUPEN LEO Series is the most efficient solution.

With their compact and light design the lifts will reach nearly every jobsite with the working heights from 12 to 50 meters!



## Versatile indoors ...

Be at the jobsite quickly, set up for work even quicker - especially with tasks in which time is of importance, a versatile and highly mobile solution is required! In the atriums, courtyards & arcades of modern architecture flexibility is required for being able to solve diverse challenges without too much disturbance of the building use.



### INSTALLATION

Electric & air conditioning installations, carpentry, steel or painting works... Efficient and safe height access in tight spaces is an important economic factor for applications during construction and finishing phases of many building projects.

### MAINTENANCE

Whether in museums, shopping centres or office buildings. For ongoing maintenance of the lightning, smoke detection & air conditioning systems or repair works the LEO lift is the quickest solution and more efficient than scaffolding!

### CLEANING

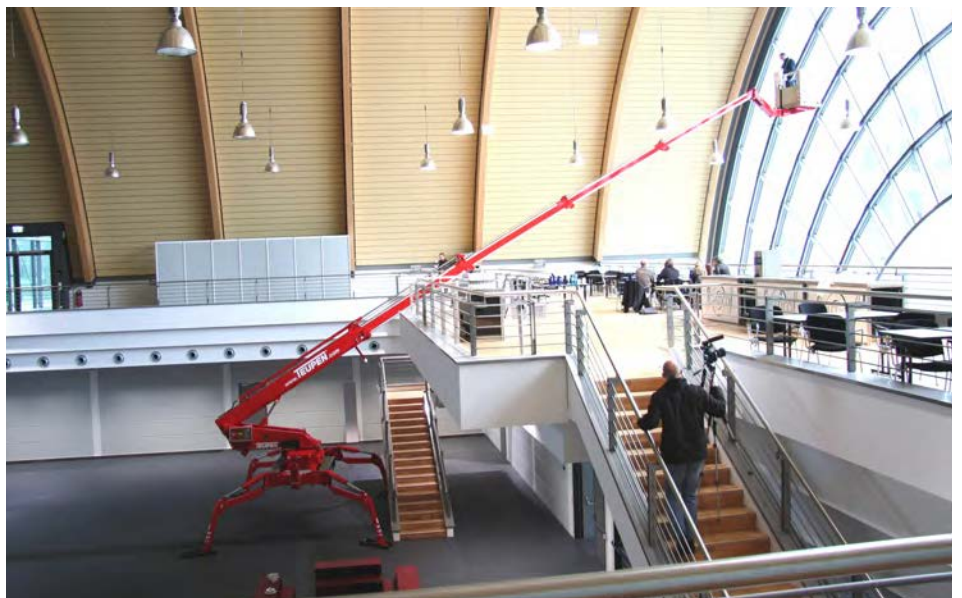
Hotels, stadiums, airports, convention centres... Especially for continuous recurring procedures like glass and interior cleaning in much frequented buildings a solution is preferable that does not affect or disturb the flow of visitors.

### FULL OUTREACH, NO COMPROMISES

Accessing the jobsite was very complicated and now the lift does not reach far enough?

As a standard, all TEUPEN lifts offer full outreach at full platform capacities of 200 kg, 250 kg or even 400 kg - in the entire working area.

There is always sufficient capacity to take two people up including material and tools.





## Robust outdoors...

Your work is highly challenging? The most demanding jobs often take place in difficult-to-reach areas or on rough terrain. To reach the jobsite even in highly challenging areas, the models of the LEO Series offer robust design, powerful engines, the safest stabiliser system and the most versatile track chassis.



### ROBUST IN CONSTRUCTION

Apart from scaffolds, all possible categories of aerial lifts are used on construction sites. Very often the perfect mix between compactness, lightness and flexibility is needed that makes the LEO to a highly appreciated all-purpose tool.



### DEMANDING FACADE WORKS

Many buildings are also hard to reach from outside, so a lot of aerial lifts would have to give up. The extreme agility and the many setup possibilities of the LEO Serie makes efficient and easy façade and roof access possible.



### TREE CARE

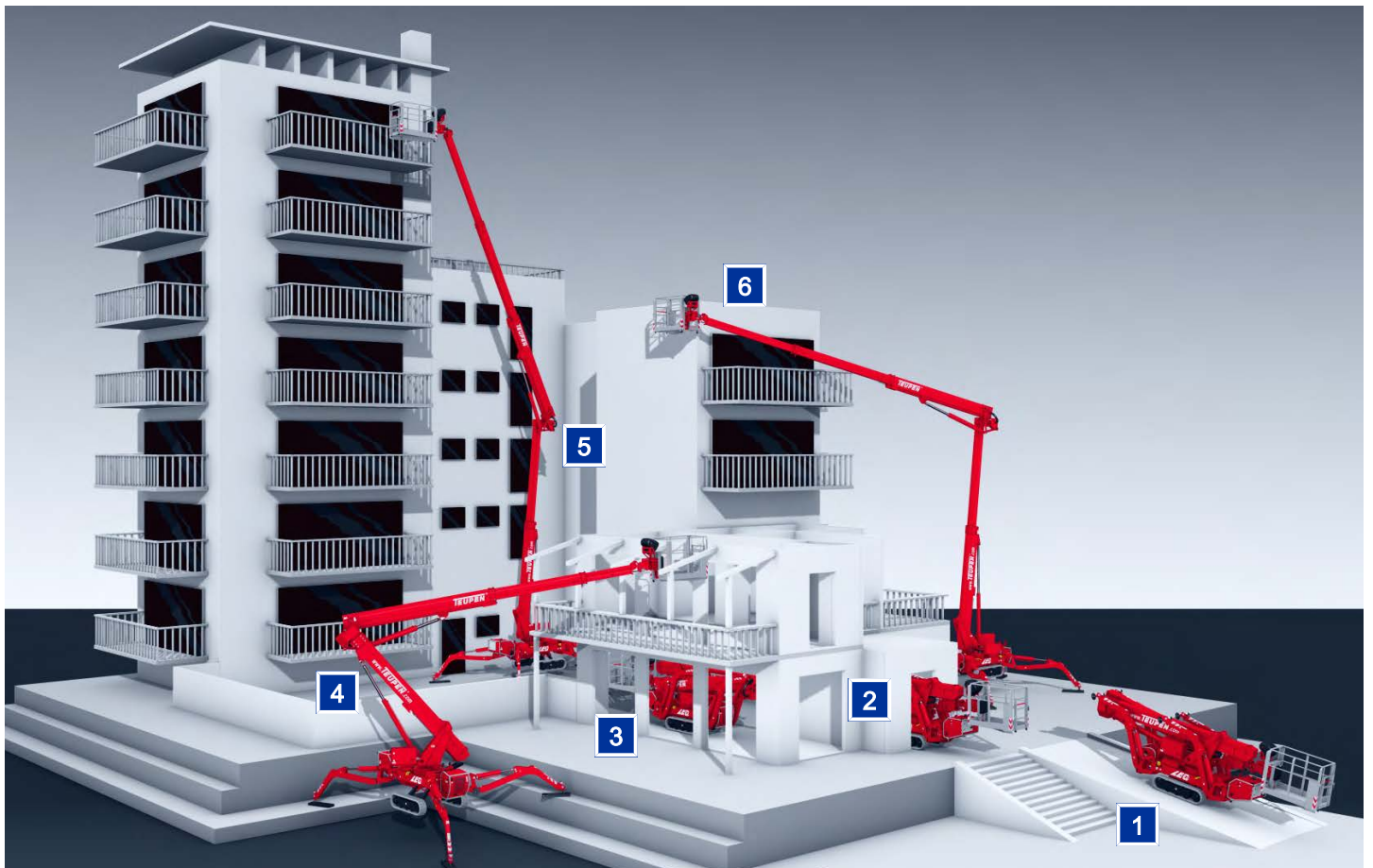
Whether in well-kept gardens with lawned areas or in robust forestry operation: Working in tree care requires a very mobile and universally applicable tool, which does not have to stop at the garden gate.



## THE INNOVATION BOOST

The new generation of our boom technology is now also available with straight-boom models. The new products in the "T-Series" now have more platform capacity and offer even more outreach!

Combined with the great features of the new control technology, the lifts are even more user-friendly and more versatile in challenging applications.



1

### SLOPES & STAIRS

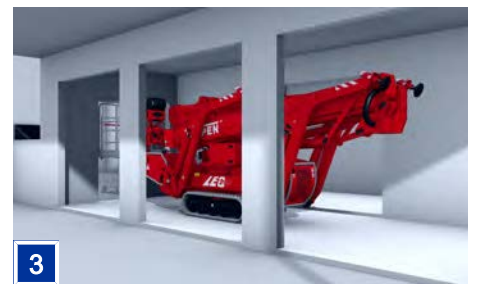
Thanks to the powerful track drive the LEO lifts can drive on slopes up to 30% inclination and even have the ability to climb stairs.



2

### DOORS & ALL WAYS

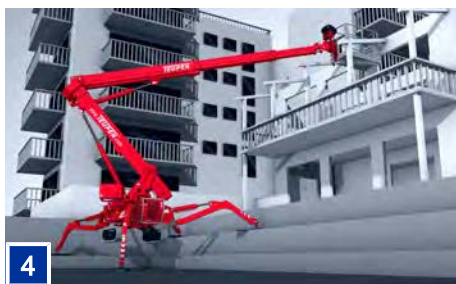
With stowed widths of 78cm, 98cm or 1,58m all models of the LEO Series fit through standard single or double doors.



3

### EXACT MANOEUVERING

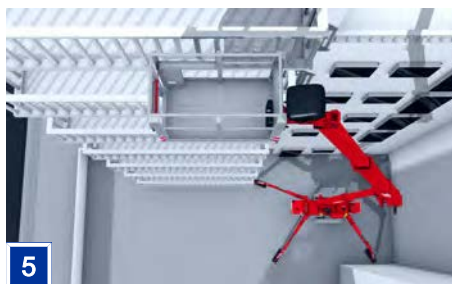
The proportional joystick controls and the precise track chassis give the operator the ability to maneuver the lift with precision.



4

### STABILISATION & LEVELLING

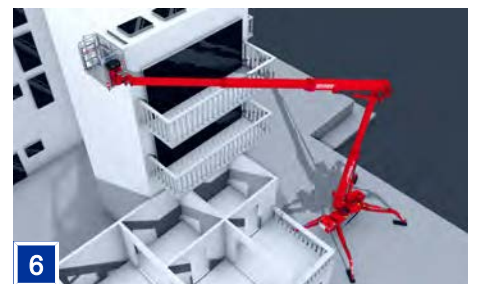
All models come with an automatic levelling system. At the push of a button, the lift positions itself comfortably into a safe working position.



5

### LOW SPACE REQUIREMENTS

The stabilisation also works on different height levels and offers various setup positions for jobsites with limited space.



6

### PRECISE PLATFORM POSITIONING

Solid boom design with enormous reach performance and smooth electroproportional controls allow an exact drive to the working location.



**TEUPEN**<sup>®</sup>  
...access redefined

*since '77*



**LE 12T**

## Your benefits

- Fits in freight elevators
- Low surface load for use on sensitive flooring
- Smooth, proportional electro-hydraulic controls
- Reliable and comprehensive safety control system
- Full height and outreach with 120 kg platform capacity
- Gradeability of 2,0 ° / 3,5 %
- Operates on 24 V battery - further engines optional



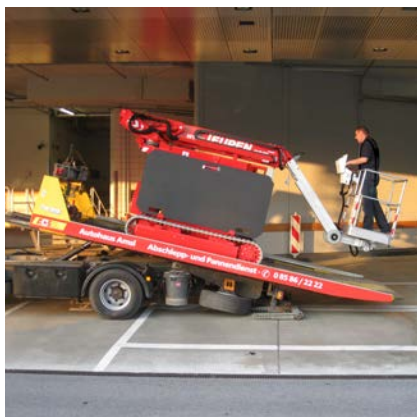
Can be driven from the platform



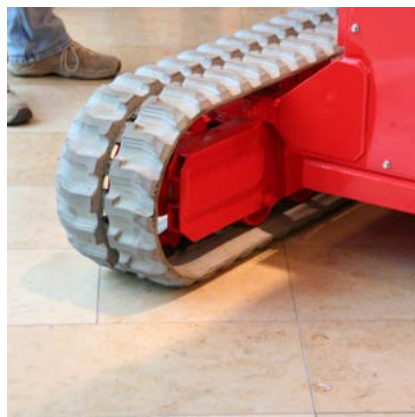
Compact design to fit in freight elevators



Working over railings



Transportation on standard vehicles



Standard: non-marking rubber tracks



Removable platform and jib

# Technical data



**TEUPEN**<sup>®</sup>  
...access redefined

since '77

## PERFORMANCE

Working height, max.	12,00 m
Platform height, max.	10,00 m
Horizontal outreach, max. (120 kg)	8,45 m
Platform capacity, max.	120 kg
Jib, movable	-
Turntable rotation, max.	220 °
Track drive, height- and width-adjustable	-
Gradeability, max.	8,5 ° / 15,0 %
Slope angle, max.	8,5 ° / 15,0 %
Travel speed, max.	1,2 km/h

## MEASUREMENTS\*

Platform (height) (A)	1,10 m
Platform (length) (B)	0,90 m
Platform (width) (C)	0,80 m
Length (D)	4,75 m
Length without platform (E)	2,80 m
Height (F)	1,99 m
Width, min. (G)	1,76 m
Track (length x width) (H)	2,20 x 0,25 m

## WEIGHT\*

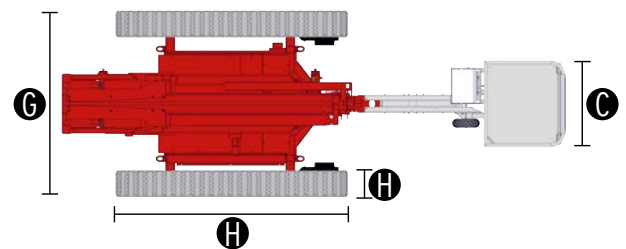
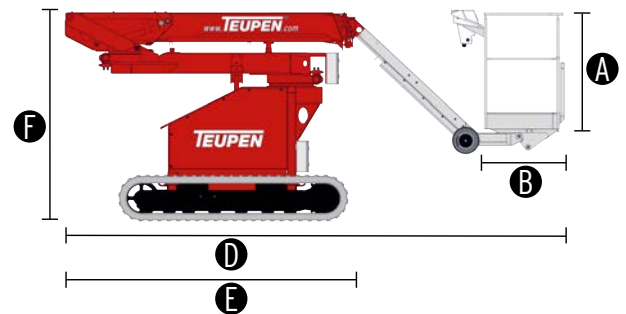
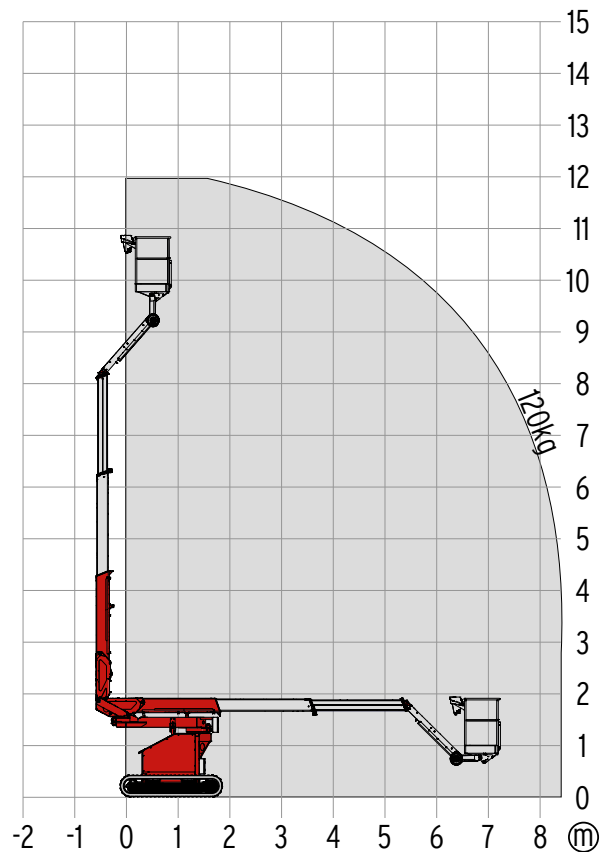
Total weight	2985 kg
Live load in travelling position	4,15 kN/m <sup>2</sup>
Live load in working position	4,15 kN/m <sup>2</sup>

## POWER SOURCES

Standard power sources:	
■ Battery drive	(24 V, 450 Ah, 4,5 kW)
Optional power sources:	
■ Electric motor	(country-specific 1-phase)
■ Combustion engine (petrol)	Honda GX390 (9,6 kW / 12,8 hp)
■ Combustion engine (Diesel)	Kubota Z602 (10,8 kW / 14,5 hp)
Fuel tank capacity (petrol engine)	6,5 l
Fuel tank capacity (Diesel engine)	13,0 l

## POWER SUPPLY

Electric current, max.	country-specific, on request
------------------------	------------------------------



## STANDARDS

2006/42/EG-Machinery directive  
(Harmonised standard EN280:2001 + A2:2009); 2004/108/EG (EMV)  
2000/14/EG (Noise emission directive)

\* The technical data may deviate +/- 3% from the specified values.  
\* Weight and dimensions may vary depending on options and accessories.

## CHASSIS

- Powerful track drive with hydraulic braking system
- Precise manoeuvring via sensitive, electro hydraulic cable remote control
- White, non-marking rubber tracks with specially arranged profile for optimal grip

## BOOM SYSTEM

- Boom system made of steel and aluminium components for better performance parameters with maximum stability
- All functions available via removable remote control
- Turntable rotation via high-performance slewing ring, worm gear and hydraulic motor
- Detachable platform
- Double turntable rotation device for more flexibility while working in facilities
- Compact machine measurements for optimal manoeuvrability

## POWER SOURCE

- 24 V battery drive including charging device

## PRODUCTIVITY, SAFETY, QUALITY

- Hydraulic emergency lowering via hand pump
- Power socket in the platform (country-specific 1-phase)
- Detachable platform, including attachment point for safety harnesses
- Drive operation without platform possible
- Hydraulic system filled with biodegradable hydraulic oil
- High-quality paint in RAL 3020 (red)
  - Hydraulic cylinders in RAL 9006 (grey)
- Unlockable check valves located directly on hydraulic cylinders
- Possible to be lifted in goods elevator
- Easily removable covers for optimal accessibility
- Hour meter
- Fuzzy control technology

## OPTIONS\*

- Petrol engine Honda GX390 (9,6 kW / 12,8 hp)
- Diesel engine Kubota Z602 (10,8 kW / 14,5 hp)
- Electric motor (country-specific 1-phase)
- Custom paintwork, one colour, according to RAL scheme
  - (except metallic coatings, signal- or special colours)
- Custom paintwork, two colours, according to RAL scheme
  - (except metallic coatings, signal- or special colours)

## ACCESSORIES\*

- Safety harness
- Track mat (2000 x 800 x 15 mm)

## CONTACT

**TEUPEN Maschinenbau GmbH**  
Marie-Curie-Str.13  
48599 Gronau  
Germany

Phone +49 2562 8161-0  
Fax +49 2562 8161-888  
E-mail mail@teupen.com

\* Weight and dimensions may vary depending on options and accessories.

Product specifications are subject to change without notice or obligation. Photographs and drawings in this document are for illustrative purposes only. Refer to the appropriate Operator's Manual for instructions on the proper use of this equipment. Failure to follow the appropriate Operator's Manual when using our equipment or to otherwise act irresponsibly may result in serious injury or death. The only warranty applicable to our equipment is the standard written warranty applicable to the particular product and sale and we make no other warranty, expressed or implied. Products and services listed may be trademarks, service marks or trade-names of TEUPEN Maschinenbau GmbH and/or its subsidiaries in the U.S.A. and many other countries. "TEUPEN", "Access redefined" and "LEO Series" are registered Trademarks of Teupen GmbH in the United States of America and many other countries. © 2020 TEUPEN Maschinenbau GmbH.



2020-B\_en



**TEUPEN**<sup>®</sup>  
...access redefined

*since '77*

**LE 23T**

## Your benefits

- Travels through a standard door
- Low surface load for use on sensitive flooring
- Smooth, proportional electro-hydraulic controls
- Automatic, multi-position and self-levelling outriggers
- Height- and width adjustable crawler tracks for driving on slopes
- Electro-hydraulic platform levelling
- User-friendly remote control with color coded functions



Height- and width adjustable crawler tracks for driving on slopes



Minimum pass through width of 0,99 m



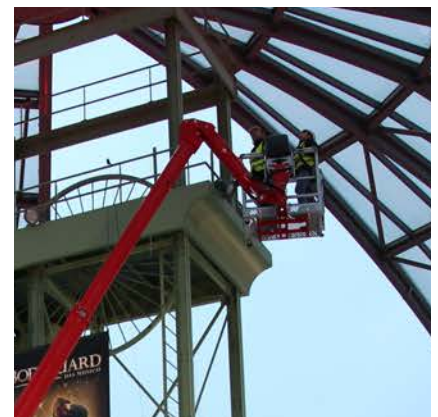
Three different set up positions: Both side wide, both side narrow, one side narrow



User-friendly remote control with colour coded functions



Usable as a crane with lifting device (300 kg capacity)



Rotatable platform (180 °)

# Technical data

# LE23T

**TEUPEN**<sup>®</sup>  
...access redefined

since '77

## PERFORMANCE

Working height, max.	23,20 m
Platform height, max.	21,20 m
Horizontal outreach, max. (250 kg)	12,50 m
Horizontal outreach, max. (80 kg)	15,60 m
Platform capacity, max.	250 kg
Jib, movable	180 °
Platform, rotatable	180 °
Turntable rotation, max.	450 °
To be jacked up on ground slope of	16,7 ° / 30,0 %
Track drive, height- and width-adjustable	19 / 46 cm
Gradeability, max.	16,7 ° / 30,0 %
Slope angle, max.	19,0 ° / 34,0 %
Travel speed, max.	4,0 km/h

## MEASUREMENTS\*

Platform (height) (A)	1,10 m
Platform (length) (B)	1,20 m
Platform (width) (C)	0,80 m
Length (D)	6,20 m
Length without platform (E)	6,20 m
Height (F)	1,99 m
Width, min. (G)	0,99 m
Ground clearance, max. (H)	0,42 m
Track (length x width) (I)	1,45 x 0,20 m
Outrigger footprint both side wide (length) (J)	4,70 m
Outrigger footprint both side wide (width) (K)	4,70 m
Outrigger footprint one side narrow (length) (L)	6,30 m
Outrigger footprint one side narrow (width) (M)	3,65 m
Outrigger footprint both sides narrow (width) (N)	2,65 m
Outrigger plate Ø	0,18 m

## WEIGHT\*

Total weight	3050 kg
Live load in travelling position	3,90 kN/m <sup>2</sup>
Live load in working position	1,60 kN/m <sup>2</sup>
Point load per outrigger plate, max.	23,70 kN

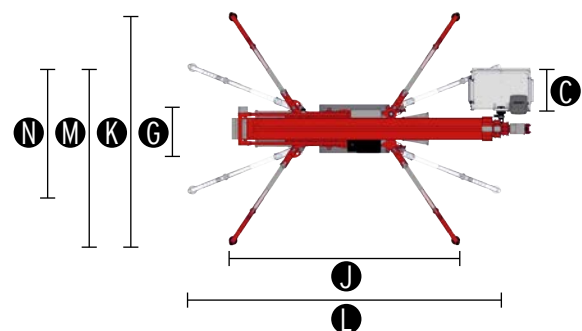
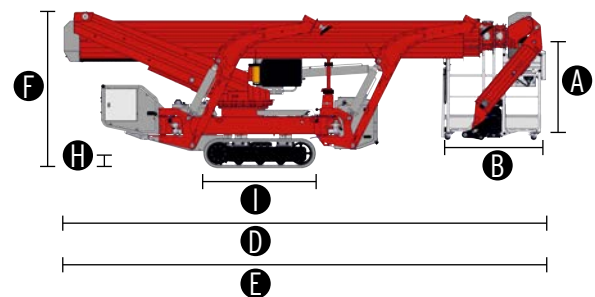
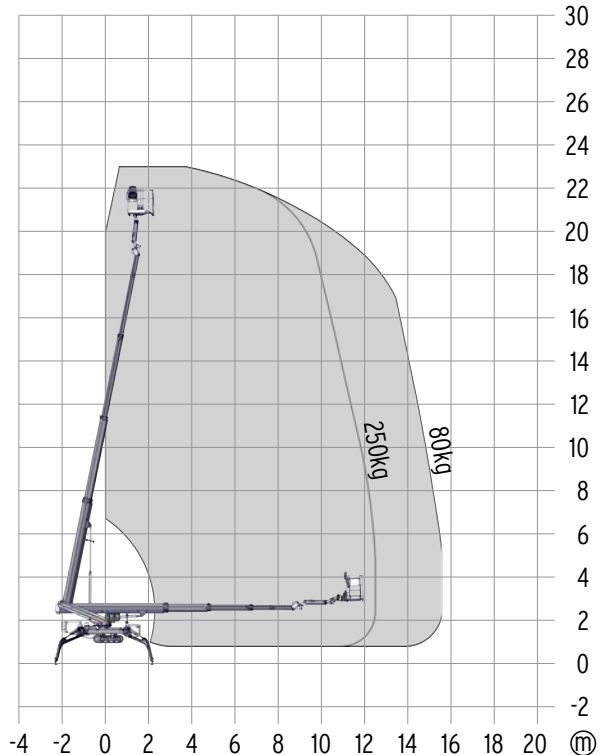
## POWER SOURCES

Standard power sources:

■ Electric motor	(country-specific 1-phase)
■ Combustion engine (Diesel)	Kubota Z602 (10,8 kW / 14,5 hp)
Fuel tank capacity (Diesel engine)	25,0 l

## POWER SUPPLY

Electric current, max.	country-specific, on request
------------------------	------------------------------



## STANDARDS

2006/42/EG-Machinery directive  
(Harmonised standard EN280:2016); 2004/108/EG (EMV);  
2000/14/EG (Noise emission directive)

\* The technical data may deviate +/- 3% from the specified values.  
\* Weight and dimensions may vary depending on options and accessories.

## CHASSIS

- Powerful track drive with hydraulic braking system
- Precise manoeuvring via sensitive remote control
- Indoor non-marking rubber tracks, with less tread depth the profile enables smooth travelling
- Hydraulically height- and width-adjustable crawler track drive

## STABILISATION

- Electrohydraulic stabilisation with automatic levelling and ground pressure sensor system
- Variable outrigger system with one side or both sides narrow setup option
- Wear resistant, ant-friction outrigger pads

## BOOM SYSTEM

- Telescopic boom with special edge profiles made of high-strength steel
- All functions available via radio remote control
- Stepless, electrical proportional control system with intuitive operation
- Coming home and memory function
- Robust, lockable control panel
- Parallel guided platform with electro hydraulic levelling
- 180° platform rotation for additional flexibility
- Turntable rotation via high-performance slewing ring, worm gear and hydraulic motor

## POWER SOURCE

- Electric motor (country-specific 1-phase)
- Diesel engine Kubota Z602 (10,8 kW / 14,5 hp)
- Start-stop device for combustion engine in the platform

## PRODUCTIVITY, SAFETY, QUALITY

- Hydraulic emergency lowering via electric pump
- Additional hydraulic drive for boom recovery via platform control
- Power socket in the platform (country-specific 1-phase)
- Detachable platform, attachment points for safety harnesses and tool tray
- Drive operation without platform possible
- Lockable storage box
- Protected, internal power track for platform control
- Hydraulic system filled with biodegradable hydraulic oil
- High-quality paint in RAL 3020 (red)
  - Hydraulic cylinders in RAL 9006 (grey)
- Unlockable check valves located directly on hydraulic cylinders
- Hydraulic system protected by pressure relief valves
- Hydraulic tank, emergency control, connecting cables and hoses are mounted protected
- Display in the control panel
- Additional display in the control box
- Hour meter
- Fuzzy control technology

## OPTIONS\*

- Platform ladder monitoring system with boom function cut-off
- Custom paintwork, one colour, according to RAL scheme
  - (except metallic coatings, signal- or special colours)
- Custom paintwork, two colours, according to RAL scheme
  - (except metallic coatings, signal- or special colours)
- White, non-marking rubber tracks with specially arranged profile for optimal grip
- TOP level 1
- Lighting package:
  - 8 flashlights (outriggers)
  - 3 flashlights (turntable)
- 2 LED headlights (combustion engine)
- 1 LED headlight (platform)
- Snap hook, boom tubes
- Copper strips, pivot point

## ACCESSORIES\*

- Safety harness
- Track mat (2000 x 800 x 15 mm)
- 4 sliding pads
- 2 protective track covers made of high-quality polypropylene fabric
- Tree package, including
  - Cover (control box, turntable)
  - Cover (control box, chassis)
  - Cover (hydraulic and fuel tank)
  - 4 covers, piston rod (outrigger)
- 4 covers, piston rod (outrigger)
- Lifting device (300 kg capacity)
- Platform (900 x 800 mm)

## TRAILER OR SUBFRAME

- Tandem low platform trailer (aluminium)
  - Maximum permissible weight (3,5 t)
  - Net weight (460 kg)
  - Payload (3040 kg)

## CONTACT

**TEUPEN Maschinenbau GmbH**  
 Marie-Curie-Str.13  
 48599 Gronau  
 Germany

Phone +49 2562 8161-0  
 Fax +49 2562 8161-888  
 E-mail mail@teupen.com

\* Weight and dimensions may vary depending on options and accessories.

Product specifications are subject to change without notice or obligation. Photographs and drawings in this document are for illustrative purposes only. Refer to the appropriate Operator's Manual for instructions on the proper use of this equipment. Failure to follow the appropriate Operator's Manual when using our equipment or to otherwise act irresponsibly may result in serious injury or death. The only warranty applicable to our equipment is the standard written warranty applicable to the particular product and sale and we make no other warranty, expressed or implied. Products and services listed may be trademarks, service marks or trade-names of TEUPEN Maschinenbau GmbH and/or its subsidiaries in the U.S.A. and many other countries. "TEUPEN", "Access redefined" and "LEO Series" are registered Trademarks of Teupen GmbH in the United States of America and many other countries. © 2020 TEUPEN Maschinenbau GmbH.



2020-B\_en



**TEUPEN**<sup>®</sup>  
...access redefined

since '77

**LEO** 30T plus

**LEO** 35T plus

Your benefits

- Up to 400 kg platform capacity
- Electric emergency lowering system as standard
- Travels through a double door
- Low surface load for use on sensitive flooring
- Automatic, multi-position and self-levelling outriggers
- Hydraulically height- and width adjustable crawler tracks
- Radio remote control with colour coded functions and a two-line display



Four different platform sizes available:  
900x800 mm, 1200x800 mm, 1500x800 mm, 2000x800 mm



Rotatable jib (180 °) and platform (2x 90 °)



Three different set up positions: Both side wide, both side narrow, one side narrow



Diesel engine as standard - battery drive optional selectable



Usable as a crane with lifting device (450 kg capacity)



User-friendly radio remote control with colour coded functions

# Technical data



**TEUPEN**<sup>®</sup>  
...access redefined

since 77

## PERFORMANCE

Working height, max. (300 kg / 400 kg)	30,00 m / 27,00 m
Working height, max. (both sides narrow)	25,00 m
Working height, max. (one sides narrow)	27,00 m
Platform height (300 kg / 400 kg)	28,00 m / 25,00 m
Platform height, max. (both side narrow)	23,00 m
Platform height, max. (one side narrow)	25,00 m
Horizontal outreach, max. (400 kg)	12,70 m
Horizontal outreach, max. (300 kg)	14,00 m
Horizontal outreach, max. (140 kg)	16,00 m
Horizontal outreach, max. (both sides narrow)	14,50 m
Platform capacity, max.	400 kg
Platform capacity, max. (both sides narrow)	250 kg
Jib, movable	180 °
Platform, rotatable	180 °
Turntable rotation, max.	450 °
To be jacked up on ground slope of	16,7 ° / 30,0 %
Track drive, height- and width-adjustable	24 / 22 cm
Gradeability, max.	16,7 ° / 30,0 %
Slope angle, max.	21,0 ° / 38,0 %
Travel speed, max.	3,0 km/h

## MEASUREMENTS\*

Platform (height) (A)	1,10 m
Platform (length) (B)	1,20 m
Platform (width) (C)	0,80 m
Length (D)	7,70 m
Length without platform (E)	7,50 m
Height (F)	1,98 m
Width, min. (G)	1,58 m
Ground clearance, max. (H)	0,43 m
Track (length x width) (I)	1,92 x 0,25 m
Outrigger footprint both side wide (length) (J)	5,51 m
Outrigger footprint both side wide (width) (K)	5,60 m
Outrigger footprint one side narrow (length) (L)	7,55 m
Outrigger footprint one side narrow (width) (M)	4,30 m
Outrigger footprint both sides narrow (width) (N)	2,99 m
Outrigger plate (length x width)	0,31 m x 0,22 m

## WEIGHT\*

Total weight	4500 kg
Live load in travelling position	4,10 kN/m <sup>2</sup>
Live load in working position	1,70 kN/m <sup>2</sup>
Point load per outrigger plate, max.	32,00 kN

## POWER SOURCES

Standard power sources:

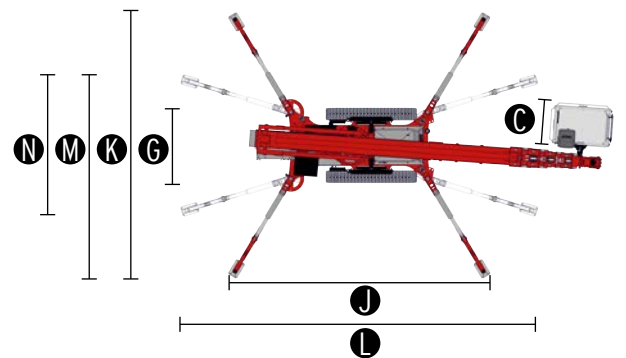
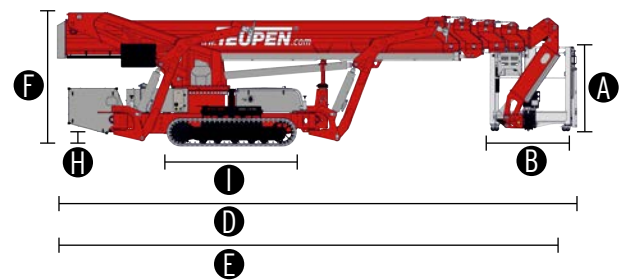
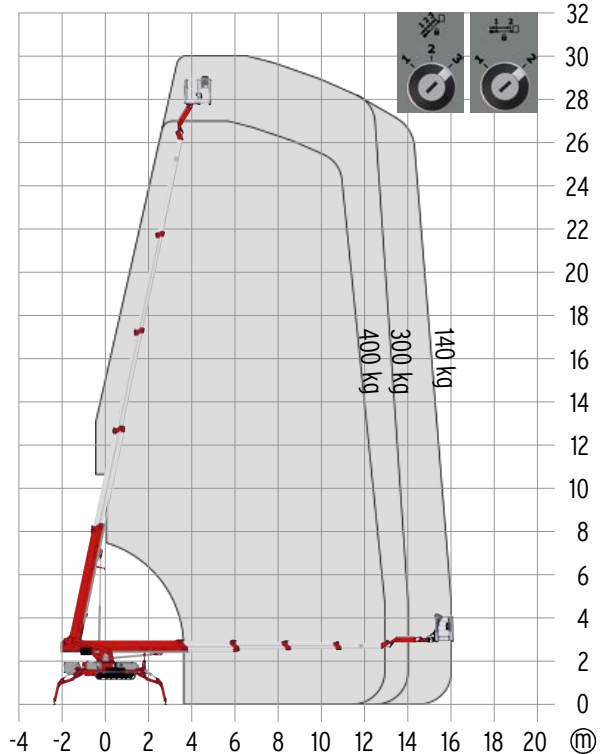
■ Electric motor	(country-specific 1-phase)
■ Combustion engine (Diesel)	Kubota D902 (16,1 kW / 21,6 hp)

Optional power source:

■ Battery drive (lead acid)	80 V
Fuel tank capacity (Diesel engine)	39,0 l

## POWER SUPPLY

Electric current, max.	country-specific, on request
------------------------	------------------------------



## STANDARDS

2006/42/EG-Machinery directive  
(Harmonised standard EN280:2016); 2004/108/EG (EMV);  
2000/14/EG (Noise emission directive)

\* The technical data may deviate +/- 3% from the specified values.  
\* Weight and dimensions may vary depending on options and accessories.

## CHASSIS

- Powerful track drive with hydraulic braking system
- Precise manoeuvring via sensitive remote control
- White, non-marking rubber tracks with specially arranged profile for optimal grip
- Hydraulically height- and width-adjustable crawler track drive

## STABILISATION

- Electrohydraulic stabilisation with automatic levelling and ground pressure sensor system
- Variable outrigger system with one side or both sides narrow setup option
- Outrigger pads, steel

## BOOM SYSTEM

- Boom system made of steel/aluminium boom tubes
- All functions available via radio remote control
- Stepless, electrical proportional control system with intuitive operation
- Robust, lockable control panel
- Parallel guided platform with electro hydraulic levelling
- 180° platform rotation for additional flexibility
- Turntable rotation via high-performance slewing ring and hydraulic motor
- Platform changing system
- Coming home and memory function - can be stored for any point on the work diagram and the point can be accessed once more at the touch of a button
- Radio control with display, two-line
- Height cut-off for boom system, 2 set points
- Horizontal outreach, selectable
- Platform capacity, selectable (300 kg / 400 kg)

## POWER SOURCE

- Electric motor (country-specific 1-phase)
- Diesel engine Kubota D902 (16,1 kW / 21,6 hp)
- Start-stop device for combustion engine via radio control

## PRODUCTIVITY, SAFETY, QUALITY

- Hydraulic emergency lowering via electric pump
- Additional hydraulic drive for boom recovery via platform control
- Power socket in the platform (country-specific 1-phase)
- 2 LED headlights (drive unit)
- Detachable platform, attachment points for safety harnesses and tool tray
- Drive operation without platform possible
- Lockable storage box
- Protected, internal power track for platform control
- Hydraulic system filled with biodegradable hydraulic oil
- High-quality paint in RAL 3020 (red)
  - Hydraulic cylinders in RAL 9006 (grey)
- Unlockable check valves located directly on hydraulic cylinders
- Hydraulic system protected by pressure relief valves
- Hydraulic tank, emergency control, connecting cables and hoses are mounted protected
- Display in the control panel
- Hour meter
- Fuzzy control technology

## OPTIONS\*

- Battery drive 80 V including charging device
  - Fillingsystem aquamatic (electrically)
- Custom paintwork, one colour, according to RAL scheme
  - (except metallic coatings, signal- or special colours)
- Custom paintwork, two colours, according to RAL scheme
  - (except metallic coatings, signal- or special colours)
- Water and air connection, platform

## ACCESSORIES\*

- Safety harness
- Track mat (2000 x 800 x 15 mm)
- 4 sliding pads (850 x 340 x 75 mm)
- Storage frame for sliding pads, lockable
- Snap hook, boom tubes
- 2 protective track covers made of high-quality polypropylene fabric
- Additional display in the control box
- Tree package, including
  - Cover (hydraulic tank, fuel tank, control box)
  - 4 covers, piston rod (outrigger)
  - Cover (gear box)
- Lighting package:
  - 8 flashlights (outriggers)
  - 3 flashlights (turntable)
- 1 LED headlight (platform)
- Platform including platform support (900 x 800 mm)
- Platform including platform support (1500 x 800 mm)
- Platform including platform support (2000 x 800 mm)
- Lifting device (450 kg capacity)
  - Only in combination with additional display in the control box
- Copper strips, pivot point
- Platform ladder monitoring system with boom function cut-off
- TOP level 1

## CONTACT

**TEUPEN Maschinenbau GmbH**  
Marie-Curie-Str.13  
48599 Gronau  
Germany

Phone +49 2562 8161-0  
Fax +49 2562 8161-888  
E-mail mail@teupen.com

\* Weight and dimensions may vary depending on options and accessories.

Product specifications are subject to change without notice or obligation. Photographs and drawings in this document are for illustrative purposes only. Refer to the appropriate Operator's Manual for instructions on the proper use of this equipment. Failure to follow the appropriate Operator's Manual when using our equipment or to otherwise act irresponsibly may result in serious injury or death. The only warranty applicable to our equipment is the standard written warranty applicable to the particular product and sale and we make no other warranty, expressed or implied. Products and services listed may be trademarks, service marks or trade-names of TEUPEN Maschinenbau GmbH and/or its subsidiaries in the U.S.A. and many other countries. "TEUPEN", "Access redefined" and "LEO Series" are registered Trademarks of Teupen GmbH in the United States of America and many other countries. © 2020 TEUPEN Maschinenbau GmbH.



2020-B\_en

# Technical data



## PERFORMANCE

Working height, max. (300 kg / 400 kg)	35,00 m / 32,00 m
Working height, max. (both sides narrow)	30,00 m
Working height, max. (one sides narrow)	32,00 m
Platform height (300 kg / 400 kg)	33,00 m / 30,00 m
Platform height, max. (both side narrow)	28,00 m
Platform height, max. (one side narrow)	30,00 m
Horizontal outreach, max. (400 kg)	13,00 m
Horizontal outreach, max. (300 kg)	14,00 m
Horizontal outreach, max. (140 kg)	16,00 m
Horizontal outreach, max. (both sides narrow)	14,50 m
Platform capacity, max.	400 kg
Platform capacity, max. (both sides narrow)	400 kg
Jib, movable	180 °
Platform, rotatable	180 °
Turntable rotation, max.	450 °
To be jacked up on ground slope of	16,7 ° / 30,0 %
Track drive, height- and width-adjustable	24 / 22 cm
Gradeability, max.	16,7 ° / 30,0 %
Slope angle, max.	21,0 ° / 38,0 %
Travel speed, max.	3,0 km/h

## MEASUREMENTS\*

Platform (height) (A)	1,10 m
Platform (length) (B)	1,20 m
Platform (width) (C)	0,80 m
Length (D)	8,00 m
Length without platform (E)	7,80 m
Height (F)	1,99 m
Width, min. (G)	1,58 m
Ground clearance, max. (H)	0,43 m
Track (length x width) (I)	1,92 x 0,25 m
Outrigger footprint both side wide (length) (J)	5,51 m
Outrigger footprint both side wide (width) (K)	5,60 m
Outrigger footprint one side narrow (length) (L)	7,55 m
Outrigger footprint one side narrow (width) (M)	4,30 m
Outrigger footprint both sides narrow (width) (N)	2,99 m
Outrigger plate (length x width)	0,31 m x 0,22 m

## WEIGHT\*

Total weight	5400 kg
Live load in travelling position	4.30 kN/m <sup>2</sup>
Live load in working position	2.10 kN/m <sup>2</sup>
Point load per outrigger plate, max.	36.00 kN

## POWER SOURCES

Standard power sources:

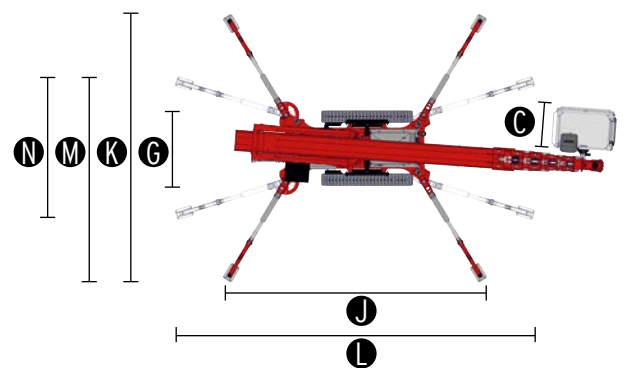
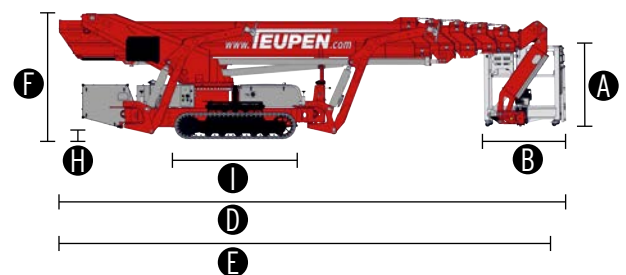
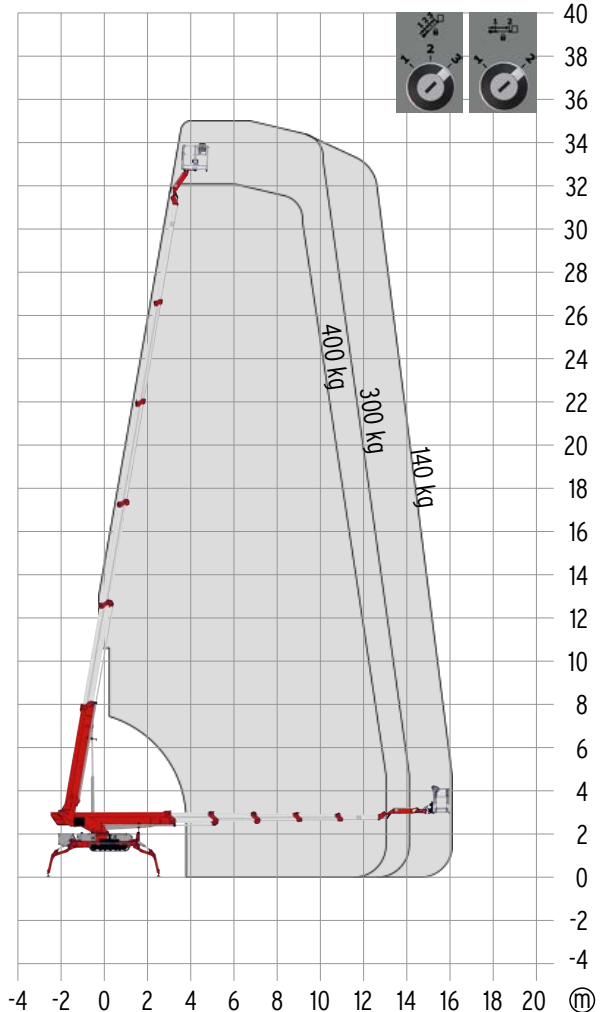
■ Electric motor	(country-specific 1-phase)
■ Combustion engine (Diesel)	Kubota D902 (16,1 kW / 21,6 hp)

Optional power source:

■ Battery drive (lead acid)	80 V
Fuel tank capacity (Diesel engine)	39,0 l

## POWER SUPPLY

Electric current, max.	country-specific, on request
------------------------	------------------------------



## STANDARDS

2006/42/EG-Machinery directive  
(Harmonised standard EN280:2016); 2004/108/EG (EMV);  
2000/14/EG (Noise emission directive)

\* The technical data may deviate +/- 3% from the specified values.  
\* Weight and dimensions may vary depending on options and accessories.

## CHASSIS

- Powerful track drive with hydraulic braking system
- Precise manoeuvring via sensitive remote control
- White, non-marking rubber tracks with specially arranged profile for optimal grip
- Hydraulically height- and width-adjustable crawler track drive

## STABILISATION

- Electrohydraulic stabilisation with automatic levelling and ground pressure sensor system
- Variable outrigger system with one side or both sides narrow setup option
- Outrigger pads, steel

## BOOM SYSTEM

- Boom system made of steel/aluminium boom tubes
- All functions available via radio remote control
- Stepless, electrical proportional control system with intuitive operation
- Robust, lockable control panel
- Parallel guided platform with electro hydraulic levelling
- 180° platform rotation for additional flexibility
- Turntable rotation via high-performance slewing ring and hydraulic motor
- Platform changing system
- Coming home and memory function - can be stored for any point on the work diagram and the point can be accessed once more at the touch of a button
- Radio control with display, two-line
- Height cut-off for boom system, 2 set points
- Horizontal outreach, selectable
- Platform capacity, selectable (300 kg / 400 kg)

## POWER SOURCE

- Electric motor (country-specific 1-phase)
- Diesel engine Kubota D902 (16,1 kW / 21,6 hp)
- Start-stop device for combustion engine via radio control

## PRODUCTIVITY, SAFETY, QUALITY

- Hydraulic emergency lowering via electric pump
- Additional hydraulic drive for boom recovery via platform control
- Power socket in the platform (country-specific 1-phase)
- 2 LED headlights (drive unit)
- Detachable platform, attachment points for safety harnesses and tool tray
- Drive operation without platform possible
- Lockable storage box
- Protected, internal power track for platform control
- Hydraulic system filled with biodegradable hydraulic oil
- High-quality paint in RAL 3020 (red)
  - Hydraulic cylinders in RAL 9006 (grey)
- Unlockable check valves located directly on hydraulic cylinders
- Hydraulic system protected by pressure relief valves
- Hydraulic tank, emergency control, connecting cables and hoses are mounted protected
- Display in the control panel
- Hour meter
- Fuzzy control technology

## OPTIONS\*

- Battery drive 80 V including charging device
  - Fillingsystem aquamatic (electrically)
- Custom paintwork, one colour, according to RAL scheme
  - (except metallic coatings, signal- or special colours)
- Custom paintwork, two colours, according to RAL scheme
  - (except metallic coatings, signal- or special colours)
- Water and air connection, platform

## ACCESSORIES\*

- Safety harness
- Track mat (2000 x 800 x 15 mm)
- 4 sliding pads (850 x 340 x 75 mm)
- Storage frame for sliding pads, lockable
- Snap hook, boom tubes
- 2 protective track covers made of high-quality polypropylene fabric
- Additional display in the control box
- Tree package, including
  - Cover (hydraulic tank, fuel tank, control box)
  - 4 covers, piston rod (outrigger)
- Lighting package:
  - 8 flashlights (outriggers)
  - 3 flashlights (turntable)
- 1 LED headlight (platform)
- Platform including platform support (900 x 800 mm)
- Platform including platform support (1500 x 800 mm)
- Platform including platform support (2000 x 800 mm)
- Lifting device (450 kg capacity)
  - Only in combination with additional display in the control box
- Copper strips, pivot point
- Platform ladder monitoring system with boom function cut-off
- TOP level 1

## CONTACT

**TEUPEN Maschinenbau GmbH**  
Marie-Curie-Str.13  
48599 Gronau  
Germany

Phone +49 2562 8161-0  
Fax +49 2562 8161-888  
E-mail mail@teupen.com

\* Weight and dimensions may vary depending on options and accessories.

Product specifications are subject to change without notice or obligation. Photographs and drawings in this document are for illustrative purposes only. Refer to the appropriate Operator's Manual for instructions on the proper use of this equipment. Failure to follow the appropriate Operator's Manual when using our equipment or to otherwise act irresponsibly may result in serious injury or death. The only warranty applicable to our equipment is the standard written warranty applicable to the particular product and sale and we make no other warranty, expressed or implied. Products and services listed may be trademarks, service marks or trade-names of TEUPEN Maschinenbau GmbH and/or its subsidiaries in the U.S.A. and many other countries. "TEUPEN", "Access redefined" and "LEO Series" are registered Trademarks of Teupen GmbH in the United States of America and many other countries. © 2020 TEUPEN Maschinenbau GmbH.



2020-B\_en



## Features & Functions

Working safely and efficiently with sophisticated technology. From the ordinary into the extreme - Only because of its unique functions the LEO is able to get almost everywhere and solves tasks that require more from an aerial lift than just working height and outreach.



### DUAL DRIVE

Minimum noise and emissions with the electric drive indoors and powerful with Petrol or Diesel engines outdoors.



### BATTERY DRIVE

High-performing and long-lasting. In stead of the combustion engine the battery drive allows to work independently.



### ADJUSTABLE TRACKS

Narrow setting for minimum passing width, wide for more ground clearance and height and width for driving safely alongside slopes.



### VARIABLE STABILISER SYSTEM

Full slewing range with wide stabiliser setting. Space saving on narrow/wide or narrow/narrow position.



### MOVABLE FLY JIB

90° or 180° movable, depending on model. For more flexibility and additional possibilities positioning the platform.



### ROTATABLE PLATFORM

Corner-mounted and 180° rotatable for true extra flexibility and exact positioning.



## The controls

Red - Yellow - Blue - The same control concept for all lifts

All TEUPEN controls have a well arranged, colour coded operating panel. With a minimum number of Joysticks and selection switches, operation easy, intuitive and safe.

### TRACK DRIVE

With the selection switch on RED only the functions of the track drive will become available. The outer 2 Joysticks move the lift forwards & backwards. The electroproportional control system even passes sensitive movement of the operator on the track drive. On models with hydraulic track adjustment the two middle joysticks operate the continuous track adjustment. Additionally there is a slow and a quick drive mode.



### STABILISATION

The selection switch on YELLOW activates all stabiliser functions. If set on "Auto", each of the 4 Joysticks operates all 4 stabilisers simultaneously. Just hold the Joystick pressed until the machine has automatically levelled and allows to activate the boom functions. On "manual" each stabiliser can be operated individually according to their numbering.



### BOOM OPERATION

With activation through the stabilisation system, the boom functions in BLUE become available. The symbols for the various movements are self-explanatory and allow to quickly and intuitively operate the lift. For many models there is additionally a display in the platform that shows useful information like the momentarily available boom movements and if the load limit at the end of the working curve will be reached.





**TEUPEN**<sup>®</sup>  
...access redefined

*since '77*



**AEG 13GT**

## Your benefits

- Travels through a single door
- Low surface load for use on sensitive flooring
- Reliable and comprehensive safety control system
- Full height and outreach with 200 kg platform capacity
- Automatic self-levelling stabilisers
- Setting up on ground slopes up to 10,0 ° / 17,5 %



Gradeability of 14,4 ° / 25,5 %



Automatic self-levelling stabiliser system



Can be jacked up on ground slopes up to 10,0 ° / 17,5 %



Usable as a crane with lifting device  
(200 kg capacity)



Multiple power sources selectable: only  
Electric or Electric with Battery / Diesel



User-friendly cable control with colour  
coded functions

# Technical data

# LE 13 GT

**TEUPEN**<sup>®</sup>  
...access redefined

since '77

## PERFORMANCE

Working height, max.	12,75 m
Platform height, max.	10,75 m
Horizontal outreach, max. (200 kg)	6,05 m
Up and over clearance, max.	4,60 m
Platform capacity, max.	200 kg
Jib, movable	-
Turntable rotation, max.	355 °
To be jacked up on ground slope of	10,0 ° / 17,5 %
Track drive, height- and width-adjustable	-
Gradeability, max.	14,4 °/25,5 %
Slope angle, max.	14,4 ° / 25,5 %
Travel speed, max.	1,0 km/h

## MEASUREMENTS\*

Platform (height) (A)	1,10 m
Platform (length) (B)	1,40 m
Platform (width) (C)	0,70 m
Length (D)	4,75 m
Length without platform (E)	4,00 m
Height (F)	1,99 m
Width, min. (G)	0,78 m
Ground clearance, max. (H)	0,40 m
Track (length x width) (I)	1,18 x 0,18 m
Outrigger footprint (length) (J)	3,69 m
Outrigger footprint (width) (K)	2,86 m
Outrigger plate Ø	0,18 m

## WEIGHT\*

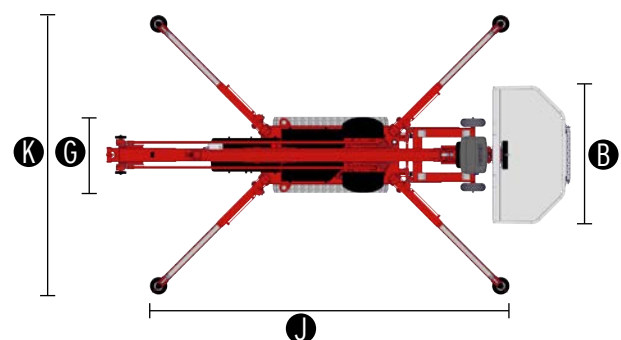
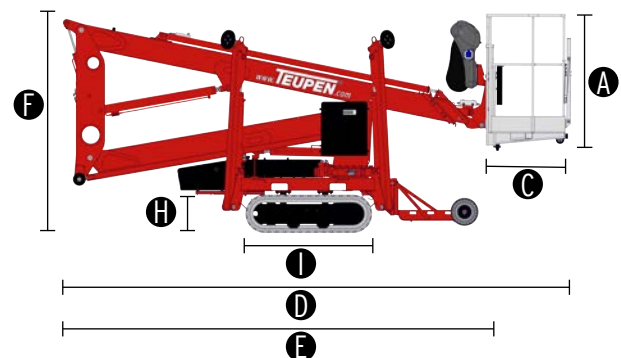
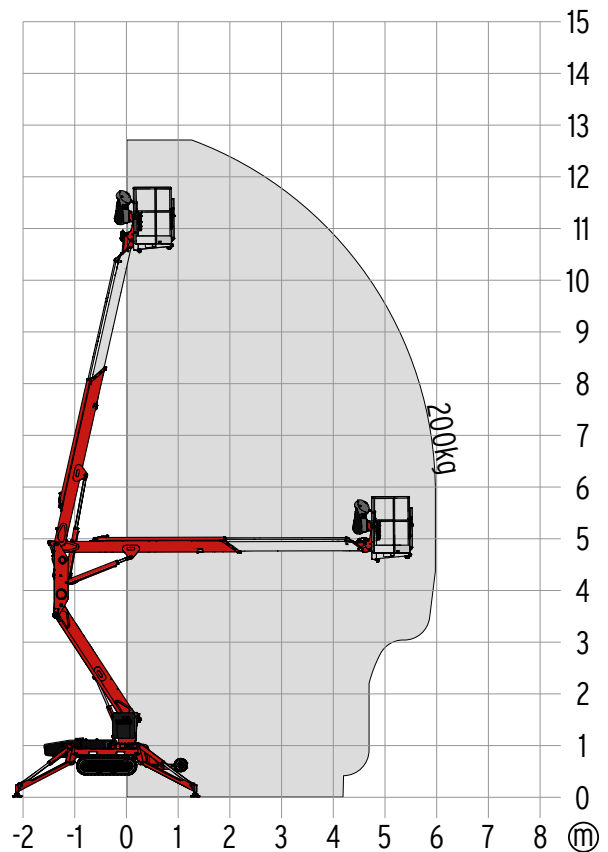
Total weight	1400 kg
Live load in travelling position	4,27 kN/m <sup>2</sup>
Live load in working position	1,75 kN/m <sup>2</sup>
Point load per outrigger plate, max.	11,70 kN

## POWER SOURCES

Standard power sources:	
■ Electric motor	(country-specific 1-phase)
Optional power sources:	
■ Generator	extern
■ Combustion engine (Diesel)	Hatz 1B30 (5,4 kW / 7,2 hp)
■ Battery drive (lead acid)	48 V
Fuel tank capacity (Diesel engine)	5,0 l

## POWER SUPPLY

Electric current, max.	country-specific, on request
------------------------	------------------------------



## STANDARDS

2006/42/EG-Machinery directive  
(Harmonised standard EN280:2001 + A2:2009); 2004/108/EG (EMV)  
2000/14/EG (Noise emission directive)

\* The technical data may deviate +/- 3% from the specified values.  
\* Weight and dimensions may vary depending on options and accessories.

## CHASSIS

- Powerful track drive with hydraulic braking system
- Precise manoeuvring via sensitive, electro hydraulic cable remote control
- White, non-marking rubber tracks with specially arranged profile for optimal grip

## STABILISATION

- Electrohydraulic stabilisation with automatic levelling and ground pressure sensor system
- Wear resistant, ant-friction outrigger pads

## BOOM SYSTEM

- All functions available from the platform
- Removable cable remote control
- Robust, lockable control panel
- Parallel guided platform with hydraulic levelling system
- Turntable rotation via high-performance slewing ring, worm gear and hydraulic motor

## POWER SOURCE

- Electric motor (country-specific 1-phase)
- Detachable support for external generator

## PRODUCTIVITY, SAFETY, QUALITY

- Hydraulic emergency lowering via hand pump
- Power socket in the platform (country-specific 1-phase)
- Detachable platform, including attachment point for safety harnesses
- Drive operation without platform possible
- Protected, internal power track for platform control
- Impact resistant cover over control box and control panel
- Hydraulic system filled with biodegradable hydraulic oil
- High-quality paint in RAL 3020 (red)
  - Hydraulic cylinders in RAL 9006 (grey)
- Unlockable check valves located directly on hydraulic cylinders
- Hydraulic system protected by pressure relief valves
- Hydraulic tank, emergency control, connecting cables and hoses are mounted protected
- Solid base frame with full-length forklift pockets
- Hour meter
- Fuzzy control technology

## OPTIONS\*

- Diesel engine Hatz 1B30 (5,4 kW / 7,2 hp)
- Battery drive 48 V (lead acid) including charging device
- Custom paintwork, one colour, according to RAL scheme
  - (except metallic coatings, signal- or special colours)
- Custom paintwork, two colours, according to RAL scheme
  - (except metallic coatings, signal- or special colours)

## ACCESSORIES\*

- Safety harness
- 4 sliding pads (700 x 220 x 60 mm)
- Track mat (2000 x 800 x 15 mm)
- Lifting device (200 kg capacity)
  - Only in combination with mounting for lifting device
- Mounting for lifting device
- 4 covers, piston rod (outrigger)
- TOP level 1

## TRAILER

- Tandem low platform trailer (aluminium)
  - Maximum permissible weight (3,0 t)
  - Net weight (450 kg)
  - Payload (2550 kg)

## CONTACT

### TEUPEN Maschinenbau GmbH

Marie-Curie-Str.13  
48599 Gronau  
Germany

Phone +49 2562 8161-0  
Fax +49 2562 8161-888  
E-mail mail@teupen.com

\* Weight and dimensions may vary depending on options and accessories.

Product specifications are subject to change without notice or obligation. Photographs and drawings in this document are for illustrative purposes only. Refer to the appropriate Operator's Manual for instructions on the proper use of this equipment. Failure to follow the appropriate Operator's Manual when using our equipment or to otherwise act irresponsibly may result in serious injury or death. The only warranty applicable to our equipment is the standard written warranty applicable to the particular product and sale and we make no other warranty, expressed or implied. Products and services listed may be trademarks, service marks or trade-names of TEUPEN Maschinenbau GmbH and/or its subsidiaries in the U.S.A. and many other countries. "TEUPEN", "Access redefined" and "LEO Series" are registered Trademarks of Teupen GmbH in the United States of America and many other countries. © 2020 TEUPEN Maschinenbau GmbH.



2020-B\_en

**TEUPEN**<sup>®</sup>  
...access redefined

since '77

EINGANG

**LEO** 15GT

## Your benefits

- Travels through a standard door
- Low surface load for use on sensitive flooring
- Smooth, proportional electro-hydraulic controls
- Reliable and comprehensive safety control system
- Full height and outreach at 200 kg platform capacity
- Automatic self-levelling stabilisers
- Setting up on ground slopes up to 13,0 ° / 23,0 %
- Optional with lifting device (200 kg capacity)



Minimum pass-through width of 0,78 m due to the removable platform



Indoor and outdoor field of applications



Transportation on a standard trailer possible (2,5-3,0 t)



Loading by forklift possible



Automatic self-levelling stabiliser system



Optional: height- and width adjustable crawler tracks

# Technical data

# LE 15 GT

**TEUPEN**<sup>®</sup>  
...access redefined

since '77

## PERFORMANCE

Working height, max.	14,70 m
Platform height, max.	12,70 m
Horizontal outreach, max. (200 kg)	7,60 m
Up and over clearance, max.	5,40 m
Platform capacity, max.	200 kg
Jib, movable	-
Turntable rotation, max.	355 °
To be jacked up on ground slope of	13,0 ° / 23,0 %
Track drive, height- and width-adjustable	12 / 18 cm
Gradeability, max.	16,7 ° / 30,0 %
Slope angle, max.	16,7 ° / 30,0 %
Travel speed, max.	1,0 km/h

## MEASUREMENTS\*

Platform (height) (A)	1,10 m
Platform (length) (B)	1,40 m
Platform (width) (C)	0,70 m
Length (D)	5,25 m
Length without platform (E)	4,52 m
Height (F)	1,99 m
Width, min. (G)	0,78 m
Ground clearance, max. (H)	0,42 m
Track (length x width) (I)	1,33 m x 0,18 m
Outrigger footprint (length) (J)	3,61 m
Outrigger footprint (width) (K)	3,15 m
Outrigger plate Ø	0,18 m

## WEIGHT\*

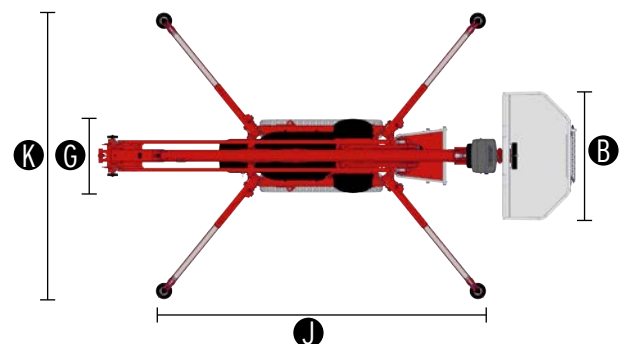
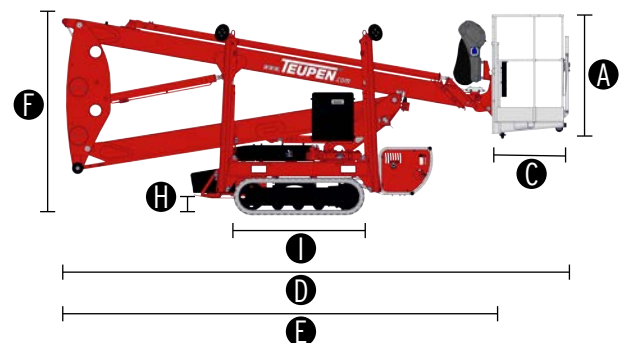
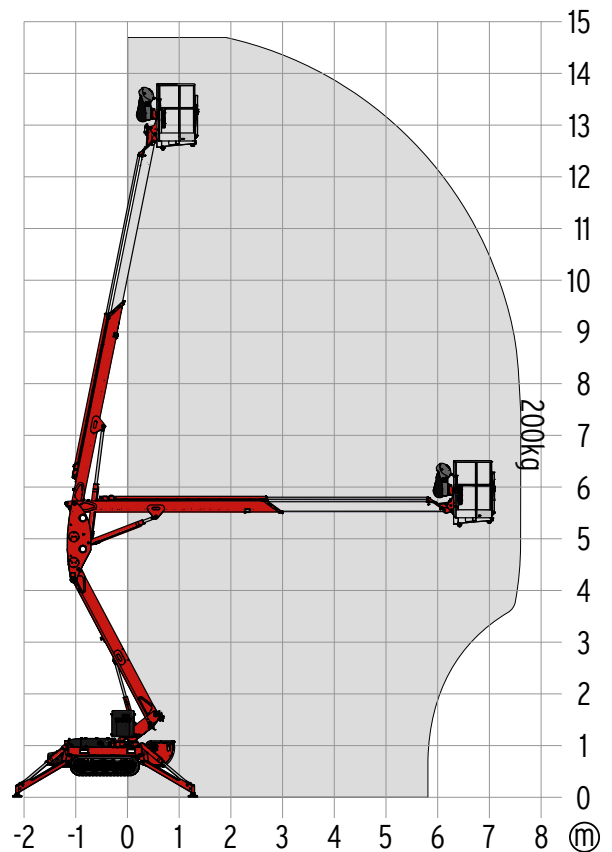
Total weight	1803 kg
Live load in travelling position	4,69 kN/m <sup>2</sup>
Live load in working position	1,98 kN/m <sup>2</sup>
Point load per outrigger plate, max.	12,80 kN

## POWER SOURCES

Standard power sources:	
■ Electric motor	(country-specific 1-phase)
■ Combustion engine (Diesel)	Hatz 1B30 (5,4 kW / 7,2 hp)
Fuel tank capacity (Diesel engine)	5,0 l

## POWER SUPPLY

Electric current, max.	country-specific, on request
------------------------	------------------------------



## STANDARDS

2006/42/EG-Machinery directive  
(Harmonised standard EN280:2001 + A2:2009); 2004/108/EG (EMV)  
2000/14/EG (Noise emission directive)

The technical data may deviate +/- 3% from the specified values.  
\* Weight and dimensions may vary depending on options and accessories.  
\*\*Option

## CHASSIS

- Powerful track drive with hydraulic braking system
- Precise manoeuvring via sensitive, electro hydraulic cable remote control
- White, non-marking rubber tracks with specially arranged profile for optimal grip

## STABILISATION

- Electrohydraulic stabilisation with automatic levelling and ground pressure sensor system
- Wear resistant, ant-friction outrigger pads

## BOOM SYSTEM

- All functions available from the platform
- Removable cable remote control
- Robust, lockable control panel
- Parallel guided platform with hydraulic levelling system
- Turntable rotation via high-performance slewing ring, worm gear and hydraulic motor

## POWER SOURCE

- Electric motor (country-specific 1-phase)
- Diesel engine Hatz 1B30 Diesel engine Hatz 1B30
- Start-stop device for combustion engine in the platform

## PRODUCTIVITY, SAFETY, QUALITY

- Hydraulic emergency lowering via hand pump
- Power socket in the platform (country-specific 1-phase)
- Detachable platform, including attachment point for safety harnesses
- Drive operation without platform possible
- Protected, internal power track for platform control
- Impact resistant cover over control box and control panel
- Hydraulic system filled with biodegradable hydraulic oil
- High-quality paint in RAL 3020 (red)
  - Hydraulic cylinders in RAL 9006 (grey)
- Unlockable check valves located directly on hydraulic cylinders
- Hydraulic system protected by pressure relief valves
- Hydraulic tank, emergency control, connecting cables and hoses are mounted protected
- Solid base frame with full-length forklift pockets
- Hour meter
- Fuzzy control technology

## OPTIONS\*

- Custom paintwork, one colour, according to RAL scheme
  - (except metallic coatings, signal- or special colours)
- Custom paintwork, two colours, according to RAL scheme
  - (except metallic coatings, signal- or special colours)
- Mechanically height- and width-adjustable track drive

## ACCESSORIES\*

- Safety harness
- 4 sliding pads (700 x 220 x 60 mm)
- Track mat (2000 x 800 x 15 mm)
- Lifting device (200 kg capacity)
  - Only in combination with mounting for lifting device
- Mounting for lifting device
- 4 covers, piston rod (outrigger)
- TOP level 1

## TRAILER

- Tandem low platform trailer (aluminium)
  - Maximum permissible weight (3,0 t)
  - Net weight (450 kg)
  - Payload (2550 kg)

## CONTACT

### TEUPEN Maschinenbau GmbH

Marie-Curie-Str.13  
48599 Gronau  
Germany

Phone +49 2562 8161-0  
Fax +49 2562 8161-888  
E-mail mail@teupen.com

\* Weight and dimensions may vary depending on options and accessories.

Product specifications are subject to change without notice or obligation. Photographs and drawings in this document are for illustrative purposes only. Refer to the appropriate Operator's Manual for instructions on the proper use of this equipment. Failure to follow the appropriate Operator's Manual when using our equipment or to otherwise act irresponsibly may result in serious injury or death. The only warranty applicable to our equipment is the standard written warranty applicable to the particular product and sale and we make no other warranty, expressed or implied. Products and services listed may be trademarks, service marks or trade-names of TEUPEN Maschinenbau GmbH and/or its subsidiaries in the U.S.A. and many other countries. "TEUPEN", "Access redefined" and "LEO Series" are registered Trademarks of Teupen GmbH in the United States of America and many other countries. © 2020 TEUPEN Maschinenbau GmbH.



2020-B\_en



**TEUPEN**<sup>®</sup>  
...access redefined

since '77



**LEO 18GT plus**

## Ihre Vorteile

- Passt durch eine Standardtür
- Geringe Nutzlast auf empfindlichen Böden
- Sanfte, elektro-proportionale Steuerung
- Verlässliches und umfassendes Sicherheitskontrollsystem
- Volle Reichweitenleistung bei 200 kg Korblast
- Vollautomatisches Abstützensystem
- Fahrbar in Steigungen bis zu 19,7 ° / 35,5 %
- Optional mit Hebeeinrichtung (200 kg Traglast)



Für Einsätze auf empfindlichen Böden geeignet



Minimale Durchfahrbreite von 0,78 m durch abnehmbaren Arbeitskorb



Arbeiten bei geringen Platzverhältnissen



Verstellbares Kettenfahrwerk zum Ausgleich von Geländeneigungen



Mit Hebeeinrichtung auch als Kran mit 200 kg Traglast einsetzbar



Standardmäßig mit Kabelsteuerung - optional mit Funkfernsteuerung

# Technical data

# LE18GTplus

**TEUPEN**<sup>®</sup>  
...access redefined

since '77

## PERFORMANCE

Working height, max.	18,30 m
Platform height, max.	16,30 m
Horizontal outreach, max. (200 kg)	8,50 m
Up and over clearance, max.	8,30 m
Platform capacity, max.	200 kg
Jib, movable	90 °
Turntable rotation, max.	355 °
To be jacked up on ground slope of	12,0 ° / 21,0 %
Track drive, height- and width-adjustable	8 / 16 cm
Gradeability, max.	19,7 ° / 35,5 %
Slope angle, max.	16,7 ° / 30,0 %
Travel speed, max.	1,8 km/h

## MEASUREMENTS\*

Platform (height) (A)	1,10 m
Platform (length) (B)	1,40 m
Platform (width) (C)	0,70 m
Length (D)	5,20 m
Length without platform (E)	4,50 m
Height (F)	1,99 m
Width, min. (G)	0,78 m
Ground clearance, max. (H)	0,25 m
Track (length x width) (I)	1,45 x 0,20 m
Outrigger footprint (length) (J)	3,31 m
Outrigger footprint (width) (K)	3,03 m
Outrigger plate Ø	0,18 m

## WEIGHT\*

Total weight	2450 kg
Live load in travelling position	4,90 kN/m <sup>2</sup>
Live load in working position	2,59 kN/m <sup>2</sup>
Point load per outrigger plate, max.	17,30 kN

## POWER SOURCES

Standard power sources:

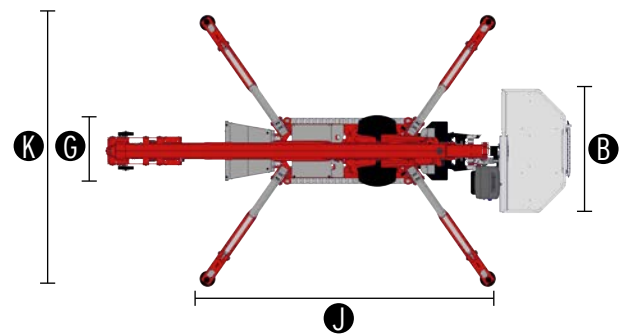
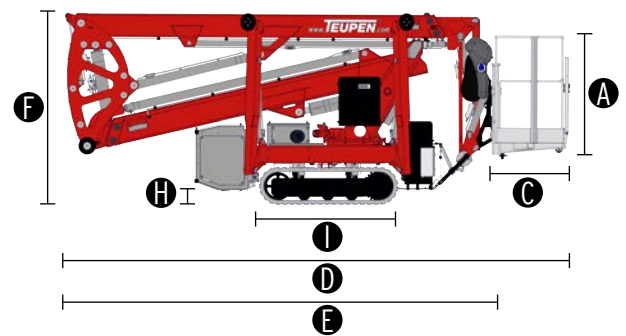
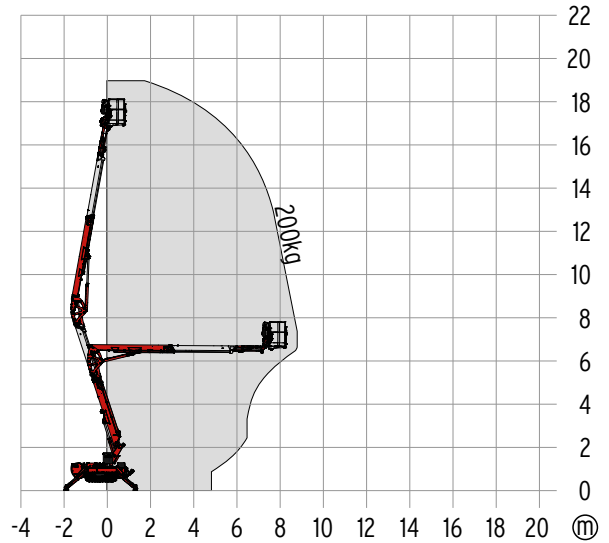
■ Electric motor	(country-specific 1-phase)
■ Combustion engine (petrol)	Vanguard OHV 16HP (11,93 kW / 16,0 hp)

Optional power source:

■ Combustion engine (Diesel)	Kubota Z602 (10,8 kW / 14,5 hp)
■ Battery drive (lead acid)	48 V
Fuel tank capacity (petrol engine)	12,0 l
Fuel tank capacity (Diesel engine)	12,0 l

## POWER SUPPLY

Electric current, max.	country-specific, on request
------------------------	------------------------------



## STANDARDS

2006/42/EG-Machinery directive  
(Harmonised standard EN280:2001 + A2:2009); 2004/108/EG (EMV)  
2000/14/EG (Noise emission directive)

\* The technical data may deviate +/- 3% from the specified values.  
\* Weight and dimensions may vary depending on options and accessories.

## CHASSIS

- Powerful track drive with hydraulic braking system
- Precise manoeuvring via sensitive, electro hydraulic cable remote control
- White, non-marking rubber tracks with specially arranged profile for optimal grip
- Mechanically height- and width-adjustable track drive

## STABILISATION

- Electrohydraulic stabilisation with automatic levelling and ground pressure sensor system
- Wear resistant, ant-friction outrigger pads

## BOOM SYSTEM

- Telescopic lower and upper boom
- All functions available from the platform
- Removable cable remote control
- Robust, lockable control panel
- Parallel guided platform with hydraulic levelling system
- Turntable rotation via high-performance slewing ring, worm gear and hydraulic motor

## POWER SOURCE

- Electric motor (country-specific 1-phase)
- Petrol engine Vanguard OHV 16HP (11,93 kW / 16,0 hp)
- Start-stop device for combustion engine in the platform

## PRODUCTIVITY, SAFETY, QUALITY

- Hydraulic emergency lowering via hand pump
- Power socket in the platform (country-specific 1-phase)
- Detachable platform, including attachment point for safety harnesses
- Drive operation without platform possible
- Protected, internal power track for platform control
- Impact resistant cover over control box and control panel
- Hydraulic system filled with biodegradable hydraulic oil
- High-quality paint in RAL 3020 (red)
  - Hydraulic cylinders in RAL 9006 (grey)
- Unlockable check valves located directly on hydraulic cylinders
- Hydraulic system protected by pressure relief valves
- Hydraulic tank, emergency control, connecting cables and hoses are mounted protected
- Solid base frame with full-length forklift pockets
- Hour meter
- Fuzzy control technology

## OPTIONS\*

- Diesel engine Kubota Z602 (10,8 kW / 14,5 hp)
- Battery drive 48 V (lead acid) including charging device
- Custom paintwork, one colour, according to RAL scheme
  - (except metallic coatings, signal- or special colours)
- Custom paintwork, two colours, according to RAL scheme
  - (except metallic coatings, signal- or special colours)
- Hydraulically height- and width-adjustable crawler track drive
- Radio remote control
- Indoor non-marking rubber tracks, with less tread depth the profile enables smooth travelling

## ACCESSORIES\*

- Safety harness
- 4 sliding pads (700 x 220 x 60 mm)
- Track mat (2000 x 800 x 15 mm)
- 2 protective track covers made of high-quality polypropylene fabric
- Lifting device (200 kg capacity)
  - Only in combination with mounting for lifting device
- Mounting for lifting device
- 4 covers, piston rod (outrigger)
- Tree package, including
  - Guard plate over cover (hydraulic tank)
  - Guard plate over cover (turntable)
- 2 LED headlights (combustion engine)
- 2 LED headlights (battery drive)
- TOP level 1

## TRAILER

- Tandem low platform trailer (aluminium)
  - Maximum permissible weight (3,0 t)
  - Net weight (450 kg)
  - Payload (2550 kg)

## CONTACT

**TEUPEN Maschinenbau GmbH**  
Marie-Curie-Str.13  
48599 Gronau  
Germany

Phone +49 2562 8161-0  
Fax +49 2562 8161-888  
E-mail mail@teupen.com

\* Weight and dimensions may vary depending on options and accessories.

Product specifications are subject to change without notice or obligation. Photographs and drawings in this document are for illustrative purposes only. Refer to the appropriate Operator's Manual for instructions on the proper use of this equipment. Failure to follow the appropriate Operator's Manual when using our equipment or to otherwise act irresponsibly may result in serious injury or death. The only warranty applicable to our equipment is the standard written warranty applicable to the particular product and sale and we make no other warranty, expressed or implied. Products and services listed may be trademarks, service marks or trade-names of TEUPEN Maschinenbau GmbH and/or its subsidiaries in the U.S.A. and many other countries. "TEUPEN", "Access redefined" and "LEO Series" are registered Trademarks of Teupen GmbH in the United States of America and many other countries. © 2020 TEUPEN Maschinenbau GmbH.



2020-B\_en

**TEUPEN**<sup>®</sup>  
...access redefined

*since '77*



**LE 21GT LE 24GT**

## Your benefits

- Travels through a standard door
- Low surface load for use on sensitive flooring
- Smooth, proportional electro-hydraulic cable control (optional - radio remote control)
- Reliable and comprehensive safety control system
- Automatic, multi-position and self-levelling outriggers
- Height- and width adjustable crawler tracks
- Optional: lifting device (250 kg capacity)



Upper and lower boom can be operated independently for overcoming barriers



Setting up on ground slopes up to 19,0 ° / 34,0 %



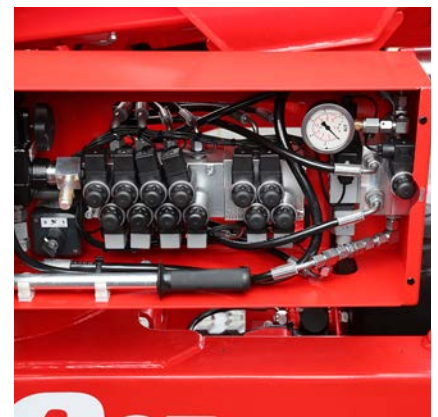
Turntable rotation (450 °)  
Rotatable platform (2x 90 °)



Minimum pass through width of 0,98 m



Height- and width adjustable crawler tracks for driving on slopes



Optional available - electric emergency lowering system

# Technical data

# LE21GT

**TEUPEN**<sup>®</sup>  
...access redefined

since '77

## PERFORMANCE

Working height, max.	21,00 m
Platform height, max.	19,00 m
Horizontal outreach, max. (250 kg)	12,00 m
Up and over clearance, max.	9,44 m
Platform capacity, max.	250 kg
Jib, movable	-
Platform, rotatable	180 °
Turntable rotation, max.	450 °
To be jacked up on ground slope of	19,0 ° / 34,0 %
Track drive, height- and width-adjustable	19 / 46 cm
Gradeability, max.	16,7 ° / 30,0 %
Slope angle, max.	19,0 ° / 34,0 %
Travel speed, max.	2,0 km/h

## MEASUREMENTS\*

Platform (height) (A)	1,10 m
Platform (length) (B)	1,40 m
Platform (width) (C)	0,70 m
Length (D)	6,40 m
Length without platform (E)	5,05 m
Height (F)	1,99 m
Width, min. (G)	0,98 m
Ground clearance, max. (H)	0,44 m
Track (length x width) (I)	1,45 x 0,20 m
Outrigger footprint both side wide (length) (J)	4,70 m
Outrigger footprint both side wide (width) (K)	4,70 m
Outrigger footprint one side narrow (length) (L)	6,30 m
Outrigger footprint one side narrow (width) (M)	3,65 m
Outrigger footprint both sides narrow (width) (N)	2,65 m
Outrigger plate Ø	0,18 m

## WEIGHT\*

Total weight	3000 kg
Live load in travelling position	4,64 kN/m <sup>2</sup>
Live load in working position	1,57 kN/m <sup>2</sup>
Point load per outrigger plate, max.	23,70 kN

## POWER SOURCES

Standard power sources:

■ Electric motor	(country-specific 1-phase)
■ Combustion engine (petrol)	Vanguard OHV 16HP (11,93 kW / 16,0 hp)

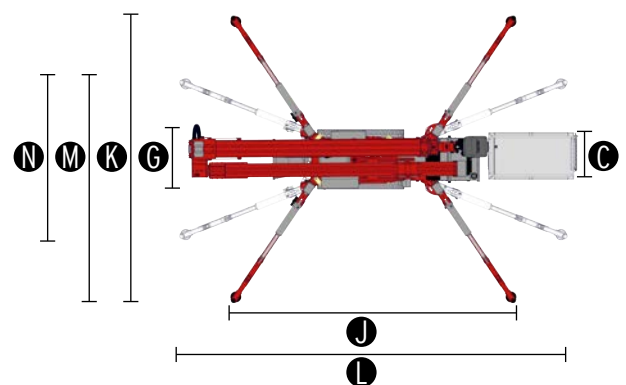
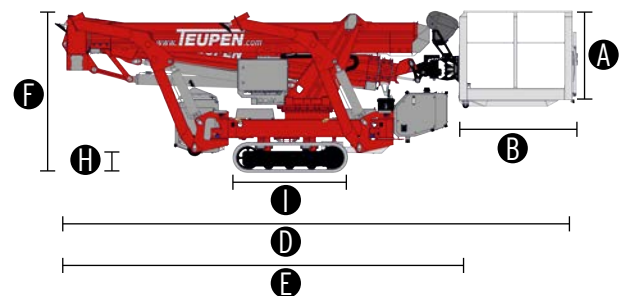
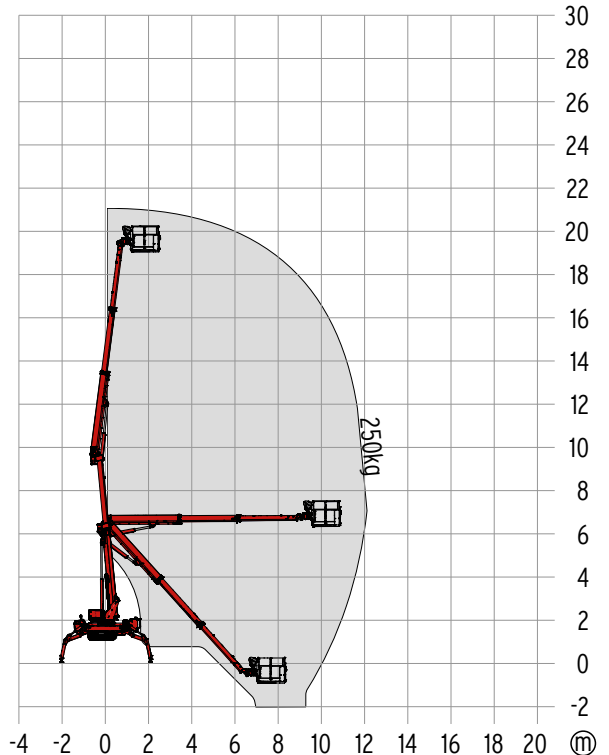
Optional power source:

■ Combustion engine (Diesel)	Kubota Z602 (10,8 kW / 14,5 hp)
■ Battery drive (lead acid)	48 V

Fuel tank capacity (petrol engine)	11,5 l
Fuel tank capacity (Diesel engine)	11,5 l

## POWER SUPPLY

Electric current, max.	country-specific, on request
------------------------	------------------------------



## STANDARDS

2006/42/EG-Machinery directive  
(Harmonised standard EN280:2013); 2004/108/EG (EMV);  
2000/14/EG (Noise emission directive)

\* The technical data may deviate +/- 3% from the specified values.  
\* Weight and dimensions may vary depending on options and accessories.

## CHASSIS

- Powerful track drive with hydraulic braking system
- Precise manoeuvring via sensitive, electro hydraulic control panel
- Indoor non-marking rubber tracks, with less tread depth the profile enables smooth travelling
- Mechanically height- and width-adjustable track drive

## STABILISATION

- Electrohydraulic stabilisation with automatic levelling and ground pressure sensor system
- Variable outrigger system with one side or both sides narrow setup option
- Wear resistant, ant-friction outrigger pads

## BOOM SYSTEM

- Telescopic lower and upper boom
- All functions available from the platform
- Stepless, electrical proportional control system with intuitive operation
- Removable cable remote control
- Robust, lockable control panel
- Parallel guided platform with electro hydraulic levelling
- Corner mounted, 180° rotatable platform for extra flexibility
- Turntable rotation via high-performance slewing ring, worm gear and hydraulic motor

## POWER SOURCE

- Electric motor (country-specific 1-phase)
- Petrol engine Vanguard OHV 16HP (11,93 kW / 16,0 hp)
- Start-stop device for combustion engine in the platform

## PRODUCTIVITY, SAFETY, QUALITY

- Hydraulic emergency lowering via hand pump
- Power socket in the platform (country-specific 1-phase)
- Detachable platform, attachment points for safety harnesses and tool tray
- Drive operation without platform possible
- Protected, internal power track for platform control
- Hydraulic system filled with biodegradable hydraulic oil
- High-quality paint in RAL 3020 (red)
  - Hydraulic cylinders in RAL 9006 (grey)
- Unlockable check valves located directly on hydraulic cylinders
- Hydraulic system protected by pressure relief valves
- Hydraulic tank, emergency control, connecting cables and hoses are mounted protected
- Cable remote control as complete control panel for bottom connection, including storage box
- Display in the control panel
- Hour meter
- Fuzzy control technology

## OPTIONS\*

- Diesel engine Kubota Z602 (10,8 kW / 14,5 hp)
- Battery drive 48 V (lead acid) including charging device
- Custom paintwork, one colour, according to RAL scheme
  - (except metallic coatings, signal- or special colours)
- Custom paintwork, two colours, according to RAL scheme
  - (except metallic coatings, signal- or special colours)
- Hydraulically height- and width-adjustable crawler track drive
- Radio remote control
- White, non-marking rubber tracks with specially arranged profile for optimal grip
- Water and air connection, platform

## ACCESSORIES\*

- Safety harness
- 4 sliding pads (700 x 220 x 60 mm)
- 2 protective track covers made of high-quality polypropylene fabric
- Track mat (2000 x 800 x 15 mm)
- Lifting device (300 kg capacity)
  - Only in combination with platform ladder monitoring system
- 4 covers, piston rod (outrigger)
- Tree package, including
  - Cover (control box, turntable)
  - 4 covers, piston rod (outrigger)
- 2 LED headlights (combustion engine)
- 2 LED headlights (battery drive)
- Platform (900 x 800 mm)
- Coming home function - automatic return of the boom into transport position
- Platform ladder monitoring system with boom function cut-off
- Emergency lowering via electric pump, including additional hydraulic drive (12 V) for boom recovery via platform control
- TOP level 1

## TRAILER OR SUBFRAME

- Tandem low platform trailer (aluminium)
  - Maximum permissible weight (3,5 t)
  - Net weight (460 kg)
  - Payload (3040 kg)

## CONTACT

**TEUPEN Maschinenbau GmbH**  
Marie-Curie-Str.13  
48599 Gronau  
Germany

Phone +49 2562 8161-0  
Fax +49 2562 8161-888  
E-mail mail@teupen.com

\* Weight and dimensions may vary depending on options and accessories.

Product specifications are subject to change without notice or obligation. Photographs and drawings in this document are for illustrative purposes only. Refer to the appropriate Operator's Manual for instructions on the proper use of this equipment. Failure to follow the appropriate Operator's Manual when using our equipment or to otherwise act irresponsibly may result in serious injury or death. The only warranty applicable to our equipment is the standard written warranty applicable to the particular product and sale and we make no other warranty, expressed or implied. Products and services listed may be trademarks, service marks or trade-names of TEUPEN Maschinenbau GmbH and/or its subsidiaries in the U.S.A. and many other countries. "TEUPEN", "Access redefined" and "LEO Series" are registered Trademarks of Teupen GmbH in the United States of America and many other countries. © 2020 TEUPEN Maschinenbau GmbH.



2020-B\_en



# Technical data

# LE24GT

**TEUPEN**<sup>®</sup>  
...access redefined

since '77

## PERFORMANCE

Working height, max.	24,00 m
Platform height, max.	22,00 m
Horizontal outreach, max. (250 kg)	12,00 m
Up and over clearance, max.	12,69 m
Platform capacity, max.	250 kg
Jib, movable	-
Platform, rotatable	180 °
Turntable rotation, max.	450 °
To be jacked up on ground slope of	19,0 ° / 34,0 %
Track drive, height- and width-adjustable	19 / 46 cm
Gradeability, max.	16,7 ° / 30,0 %
Slope angle, max.	19,0 ° / 34,0 %
Travel speed, max.	2,0 km/h

## MEASUREMENTS\*

Platform (height) (A)	1,10 m
Platform (length) (B)	1,40 m
Platform (width) (C)	0,70 m
Length (D)	6,40 m
Length without platform (E)	5,05 m
Height (F)	1,99 m
Width, min. (G)	0,98 m
Ground clearance, max. (H)	0,44 m
Track (length x width) (I)	1,45 x 0,20 m
Outrigger footprint both side wide (length) (J)	4,70 m
Outrigger footprint both side wide (width) (K)	4,70 m
Outrigger footprint one side narrow (length) (L)	6,30 m
Outrigger footprint one side narrow (width) (M)	3,65 m
Outrigger footprint both sides narrow (width) (N)	2,65 m
Outrigger plate Ø	0,18 m

## WEIGHT\*

Total weight	3300 kg
Live load in travelling position	5,06 kN/m <sup>2</sup>
Live load in working position	1,72 kN/m <sup>2</sup>
Point load per outrigger plate, max.	23,70 kN

## POWER SOURCES

Standard power sources:

■ Electric motor	(country-specific 1-phase)
■ Combustion engine (petrol)	Vanguard OHV 16HP (11,93 kW / 16,0 hp)

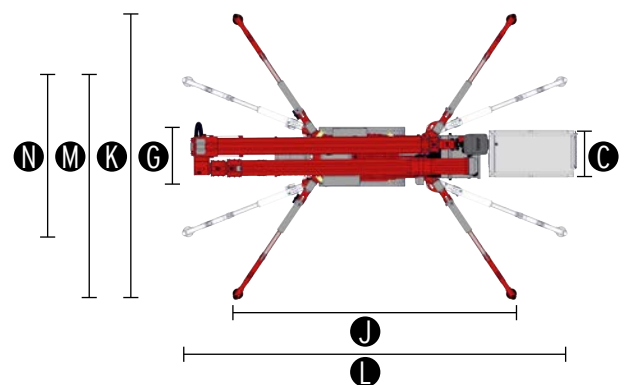
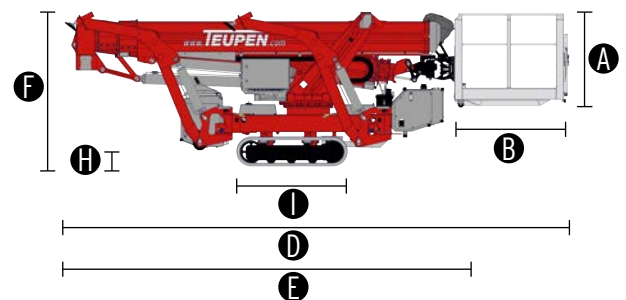
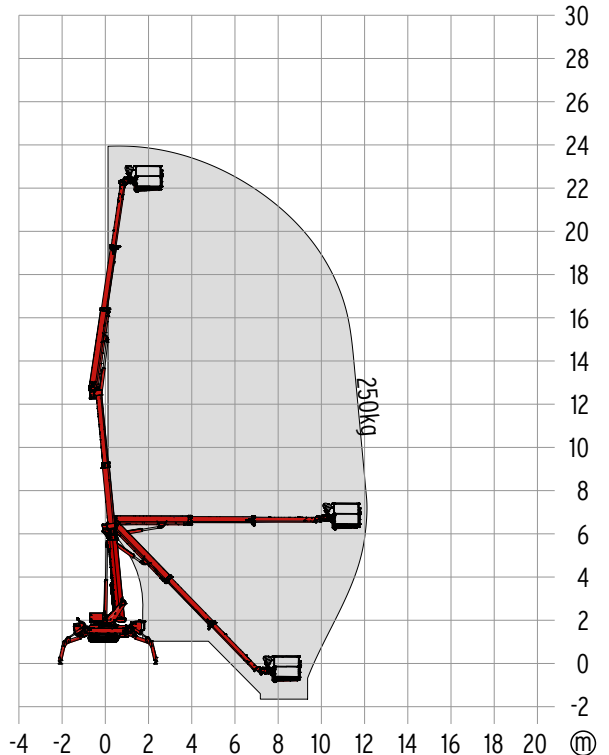
Optional power source:

■ Combustion engine (Diesel)	Kubota Z602 (10,8 kW / 14,5 hp)
■ Battery drive (lead acid)	48 V

Fuel tank capacity (petrol engine)	11,5 l
Fuel tank capacity (Diesel engine)	11,5 l

## POWER SUPPLY

Electric current, max.	country-specific, on request
------------------------	------------------------------



## STANDARDS

2006/42/EG-Machinery directive  
(Harmonised standard EN280:2013); 2004/108/EG (EMV);  
2000/14/EG (Noise emission directive)

\* The technical data may deviate +/- 3% from the specified values.  
\* Weight and dimensions may vary depending on options and accessories.

## CHASSIS

- Powerful track drive with hydraulic braking system
- Precise manoeuvring via sensitive, electro hydraulic control panel
- Indoor non-marking rubber tracks, with less tread depth the profile enables smooth travelling
- Mechanically height- and width-adjustable track drive

## STABILISATION

- Electrohydraulic stabilisation with automatic levelling and ground pressure sensor system
- Variable outrigger system with one side or both sides narrow setup option
- Wear resistant, ant-friction outrigger pads

## BOOM SYSTEM

- Telescopic lower and upper boom
- All functions available from the platform
- Stepless, electrical proportional control system with intuitive operation
- Removable cable remote control
- Robust, lockable control panel
- Parallel guided platform with electro hydraulic levelling
- Corner mounted, 180° rotatable platform for extra flexibility
- Turntable rotation via high-performance slewing ring, worm gear and hydraulic motor

## POWER SOURCE

- Electric motor (country-specific 1-phase)
- Petrol engine Vanguard OHV 16HP (11,93 kW / 16,0 hp)
- Start-stop device for combustion engine in the platform

## PRODUCTIVITY, SAFETY, QUALITY

- Hydraulic emergency lowering via hand pump
- Power socket in the platform (country-specific 1-phase)
- Detachable platform, attachment points for safety harnesses and tool tray
- Drive operation without platform possible
- Protected, internal power track for platform control
- Hydraulic system filled with biodegradable hydraulic oil
- High-quality paint in RAL 3020 (red)
  - Hydraulic cylinders in RAL 9006 (grey)
- Unlockable check valves located directly on hydraulic cylinders
- Hydraulic system protected by pressure relief valves
- Hydraulic tank, emergency control, connecting cables and hoses are mounted protected
- Cable remote control as complete control panel for bottom connection, including storage box
- Display in the control panel
- Hour meter
- Fuzzy control technology

## OPTIONS\*

- Diesel engine Kubota Z602 (10,8 kW / 14,5 hp)
- Battery drive 48 V (lead acid) including charging device
- Custom paintwork, one colour, according to RAL scheme
  - (except metallic coatings, signal- or special colours)
- Custom paintwork, two colours, according to RAL scheme
  - (except metallic coatings, signal- or special colours)
- Hydraulically height- and width-adjustable crawler track drive
- Radio remote control
- White, non-marking rubber tracks with specially arranged profile for optimal grip
- Water and air connection, platform

## ACCESSORIES\*

- Safety harness
- 4 sliding pads (700 x 220 x 60 mm)
- 2 protective track covers made of high-quality polypropylene fabric
- Track mat (2000 x 800 x 15 mm)
- Lifting device (300 kg capacity)
  - Only in combination with platform ladder monitoring system
- 4 covers, piston rod (outrigger)
- Tree package, including
  - Cover (control box, turntable)
  - 4 covers, piston rod (outrigger)
- 2 LED headlights (combustion engine)
- 2 LED headlights (battery drive)
- Platform (900 x 800 mm)
- Coming home function - automatic return of the boom into transport position
- Platform ladder monitoring system with boom function cut-off
- Emergency lowering via electric pump, including additional hydraulic drive (12 V) for boom recovery via platform control
- TOP level 1

## CONTACT

**TEUPEN Maschinenbau GmbH**  
Marie-Curie-Str.13  
48599 Gronau  
Germany

Phone +49 2562 8161-0  
Fax +49 2562 8161-888  
E-mail mail@teupen.com

\* Weight and dimensions may vary depending on options and accessories.

Product specifications are subject to change without notice or obligation. Photographs and drawings in this document are for illustrative purposes only. Refer to the appropriate Operator's Manual for instructions on the proper use of this equipment. Failure to follow the appropriate Operator's Manual when using our equipment or to otherwise act irresponsibly may result in serious injury or death. The only warranty applicable to our equipment is the standard written warranty applicable to the particular product and sale and we make no other warranty, expressed or implied. Products and services listed may be trademarks, service marks or trade-names of TEUPEN Maschinenbau GmbH and/or its subsidiaries in the U.S.A. and many other countries. "TEUPEN", "Access redefined" and "LEO Series" are registered Trademarks of Teupen GmbH in the United States of America and many other countries. © 2020 TEUPEN Maschinenbau GmbH.



2020-B\_en

**TEUPEN**<sup>®</sup>  
...access redefined

since '77



**AEO 23GT**

### Your benefits

- Travels through a standard door
- Low surface load for use on sensitive flooring
- Smooth, proportional electro-hydraulic controls
- Automatic, multi-position and self-levelling outriggers
- Height- and width adjustable crawler tracks
- Gradeability of 16,7 ° / 30,0 %
- Upper and lower boom can be used independently



Setting up on ground slopes up to 16,7 ° / 30,0 %



Flexible set up positions



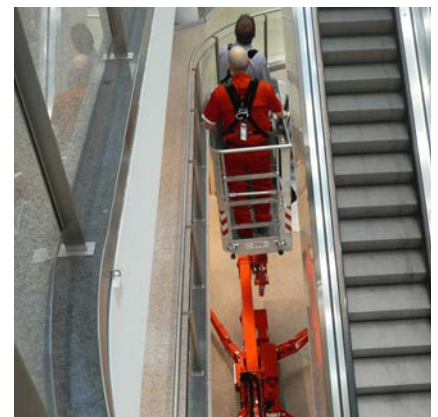
Transportation on standard vehicles (3,5 t)



Minimum pass through width of 0,98 m



Height- and width adjustable crawler tracks



Working in narrow passages due to a platform width of 0,70 m

# Technical data



**TEUPEN**<sup>®</sup>  
...access redefined

since '77

## PERFORMANCE

Working height, max.	23,00 m
Platform height, max.	21,00 m
Horizontal outreach, max. (200 kg)	11,20 m
Up and over clearance, max.	11,50 m
Platform capacity, max.	200 kg
Jib, movable	-
Platform, rotatable	180 °
Turntable rotation, max.	360 °
To be jacked up on ground slope of	16,7 ° / 30,0 %
Track drive, height- and width-adjustable	23 / 45 cm
Gradeability, max.	16,7 ° / 30,0 %
Slope angle, max.	15,5 ° / 27,0 %
Travel speed, max.	1,3 km/h

## MEASUREMENTS\*

Platform (height) (A)	1,10 m
Platform (length) (B)	1,40 m
Platform (width) (C)	0,70 m
Length (D)	6,20 m
Length without platform (E)	-
Height (F)	1,97 m
Width, min. (G)	0,98 m
Ground clearance, max. (H)	0,40 m
Track (length x width) (I)	1,45 x 0,20 m
Outrigger footprint both side wide (length) (J)	4,53 m
Outrigger footprint both side wide (width) (K)	4,33 m
Outrigger footprint one side narrow (length) (L)	5,98 m
Outrigger footprint one side narrow (width) (M)	3,42 m
Outrigger footprint both sides narrow (width) (N)	2,58 m
Outrigger plate Ø	0,18 m

## WEIGHT\*

Total weight	2990 kg
Live load in travelling position	4,02 kN/m <sup>2</sup>
Live load in working position	1,78 kN/m <sup>2</sup>
Point load per outrigger plate, max.	22,40 kN

## POWER SOURCES

Standard power sources:

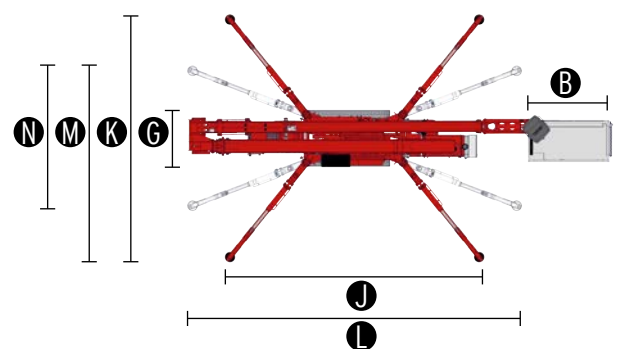
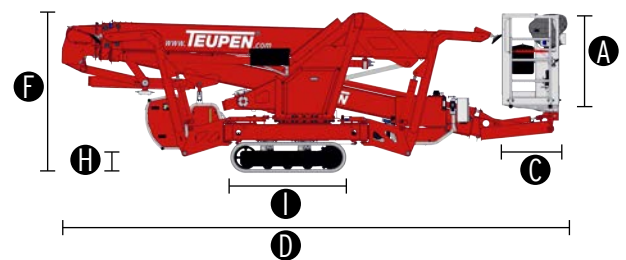
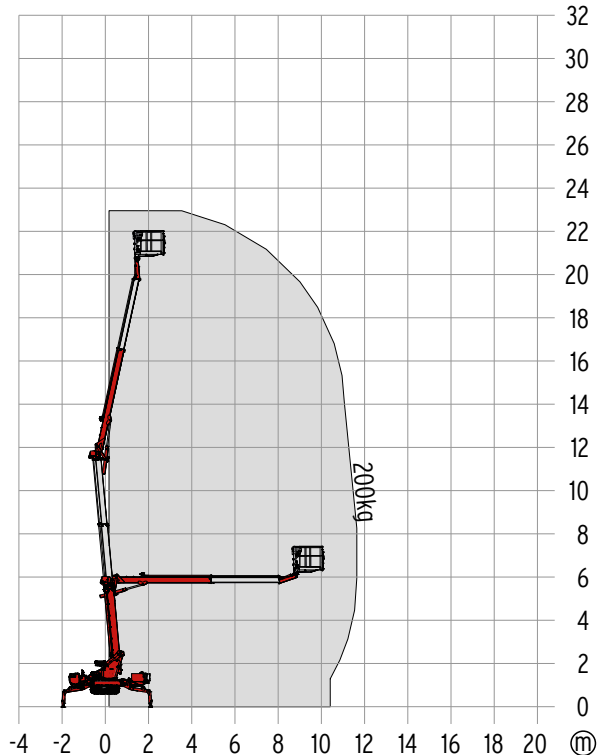
■ Electric motor	(country-specific 1-phase)
■ Combustion engine (Diesel)	Kubota Z602 (10,8 kW / 14,5 hp)

Optional power source:

■ Battery drive (lead acid)	48 V
Fuel tank capacity (Diesel engine)	12,0 l

## POWER SUPPLY

Electric current, max.	country-specific, on request
------------------------	------------------------------



## STANDARDS

2006/42/EG-Machinery directive  
(Harmonised standard EN280:2001 + A2:2009); 2004/108/EG (EMV)  
2000/14/EG (Noise emission directive)

\* The technical data may deviate +/- 3% from the specified values.  
\* Weight and dimensions may vary depending on options and accessories.

## CHASSIS

- Powerful track drive with hydraulic braking system
- Precise manoeuvring via sensitive, electro hydraulic control panel
- Indoor non-marking rubber tracks, with less tread depth the profile enables smooth travelling
- Mechanically height- and width-adjustable track drive

## STABILISATION

- Electrohydraulic stabilisation with automatic levelling and ground pressure sensor system
- Variable outrigger system with one side or both sides narrow setup option
- Wear resistant, ant-friction outrigger pads

## BOOM SYSTEM

- Telescopic lower and upper boom
- All functions available from the platform
- Robust, lockable control panel
- Parallel guided platform with electro hydraulic levelling
- Corner mounted, 180° rotatable platform for extra flexibility
- Turntable rotation via high-performance slewing ring, worm gear and hydraulic motor

## POWER SOURCE

- Electric motor (country-specific 1-phase)
- Diesel engine Kubota Z602 (10,8 kW / 14,5 hp)
- Start-stop device for combustion engine in the platform

## PRODUCTIVITY, SAFETY, QUALITY

- Hydraulic emergency lowering via hand pump
- Power socket in the platform (country-specific 1-phase)
- Platform including attachment points for safety harnesses
- Protected, internal power track for platform control
- Hydraulic system filled with biodegradable hydraulic oil
- High-quality paint in RAL 3020 (red)
  - Hydraulic cylinders in RAL 9006 (grey)
- Unlockable check valves located directly on hydraulic cylinders
- Hydraulic system protected by pressure relief valves
- Hydraulic tank, emergency control, connecting cables and hoses are mounted protected
- Cable remote control as complete control panel for bottom connection, including storage box
- Hour meter
- Fuzzy control technology

## OPTIONS\*

- Battery drive 48 V (lead acid) including charging device
- Custom paintwork, one colour, according to RAL scheme
  - (except metallic coatings, signal- or special colours)
- Custom paintwork, two colours, according to RAL scheme
  - (except metallic coatings, signal- or special colours)
- Hydraulically height- and width-adjustable crawler track drive
- Electric emergency lowering
  - This option can not be combined with battery drive
- White, non-marking rubber tracks with specially arranged profile for optimal grip

## ACCESSORIES\*

- Safety harness
- 4 sliding pads (700 x 220 x 60 mm)
- Track mat (2000 x 800 x 15 mm)
- 2 protective track covers made of high-quality polypropylene fabric
- 4 covers, piston rod (outrigger)
- Tree package, including
  - Cover (hydraulic tank)
  - Cover (telescopic cylinder hydraulic connection)
  - 4 covers, piston rod (outrigger)
- 2 LED headlights (combustion engine)
- 2 LED headlights (battery drive)
- TOP level 1

## TRAILER

- Tandem low platform trailer (aluminium)
  - Maximum permissible weight (3,5 t)
  - Net weight (460 kg)
  - Payload (3040 kg)

## CONTACT

**TEUPEN Maschinenbau GmbH**  
Marie-Curie-Str.13  
48599 Gronau  
Germany

Phone +49 2562 8161-0  
Fax +49 2562 8161-888  
E-mail mail@teupen.com

\* Weight and dimensions may vary depending on options and accessories.

Product specifications are subject to change without notice or obligation. Photographs and drawings in this document are for illustrative purposes only. Refer to the appropriate Operator's Manual for instructions on the proper use of this equipment. Failure to follow the appropriate Operator's Manual when using our equipment or to otherwise act irresponsibly may result in serious injury or death. The only warranty applicable to our equipment is the standard written warranty applicable to the particular product and sale and we make no other warranty, expressed or implied. Products and services listed may be trademarks, service marks or trade-names of TEUPEN Maschinenbau GmbH and/or its subsidiaries in the U.S.A. and many other countries. "TEUPEN", "Access redefined" and "LEO Series" are registered Trademarks of Teupen GmbH in the United States of America and many other countries. © 2020 TEUPEN Maschinenbau GmbH.



2020-B\_en

**TEUPEN**<sup>®</sup>  
...access redefined

since '77



**LEC 34GT plus** **LEC 39GT plus**

Your benefits

- Up to 400 kg platform capacity
- Electric emergency lowering system as standard
- Radio remote control with a two-line display
- Negative working area up to 9,20 m
- Rotatable platform (2x 220 °)
- Movable jib (200 °)
- Horizontal outreach of maximum 20,0 m



Working in negative areas up to 9,20 m



Upper and lower boom can be operated independently



The electric emergency lowering system is easily accessible and follows a self-explanatory 1-2-3 principle



Usable as a crane with lifting device (450 kg capacity)



Rotatable platform: 2x 220 °  
Movable jib: 200°



User-friendly radio remote control with colour coded functions



# Technical data

# LEO 34GT plus

**TEUPEN**<sup>®</sup>  
...access redefined

since '77

## PERFORMANCE

Working height, max.	34,10 m
Platform height, max.	32,10 m
Horizontal outreach, max. (400 kg)	18,00 m
Horizontal outreach, max. (300 kg)	18,90 m
Horizontal outreach, max. (140 kg)	19,90 m
Up and over clearance, max.	21,00 m
Negativ reach, max.	9,20 m
Platform capacity, max.	400 kg
Jib, movable	200 °
Platform, rotatable	2 x 220 °
Turntable rotation, max.	450 °
To be jacked up on ground slope of	16.7 ° / 30.0 %
Track drive, height- and width-adjustable	23 / 12 cm
Gradeability, max.	16.7 ° / 30.0 %
Slope angle, max.	16.7 ° / 30.0 %
Travel speed, max.	3,0 km/h

## MEASUREMENTS\*

Platform (height) (A)	1,10 m
Platform (length) (B)	1,50 m
Platform (width) (C)	0,8 m
Length (D)	7,85 m
Length without platform (E)	7,00 m
Height (F)	1,99 m
Width, min. (G)	1,59 m
Ground clearance, max. (H)	0,40 m
Track (length x width) (I)	2,12 x 0,30 m
Outrigger footprint both side wide (length) (J)	5,31 m
Outrigger footprint both side wide (width) (K)	5,20 m
Outrigger footprint one side narrow (length) (L)	7,30 m
Outrigger footprint one side narrow (width) (M)	4,00 m
Outrigger footprint both sides narrow (width) (N)	2,70 m
Outrigger plate (length x width)	0,50 m x 0,22 m

## WEIGHT\*

Total weight	8210 kg
Live load in travelling position	6,20 kN/m <sup>2</sup>
Live load in working position	3,06 kN/m <sup>2</sup>
Point load per outrigger plate, max.	57,70 kN

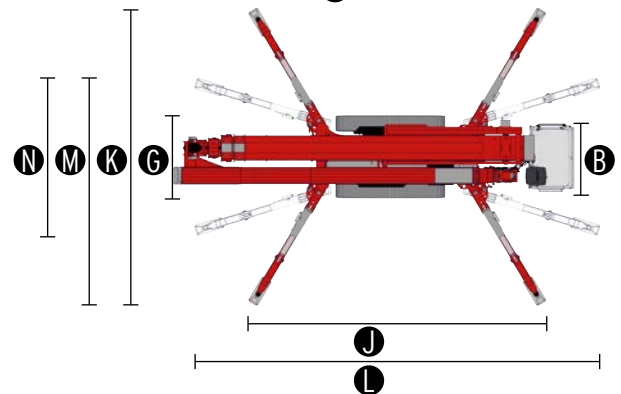
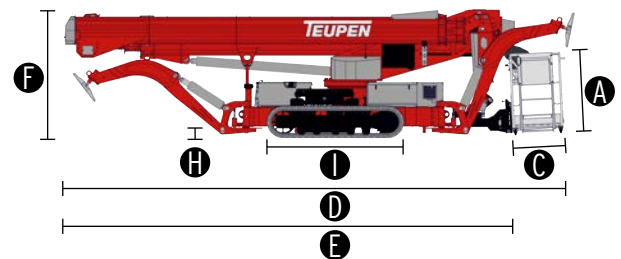
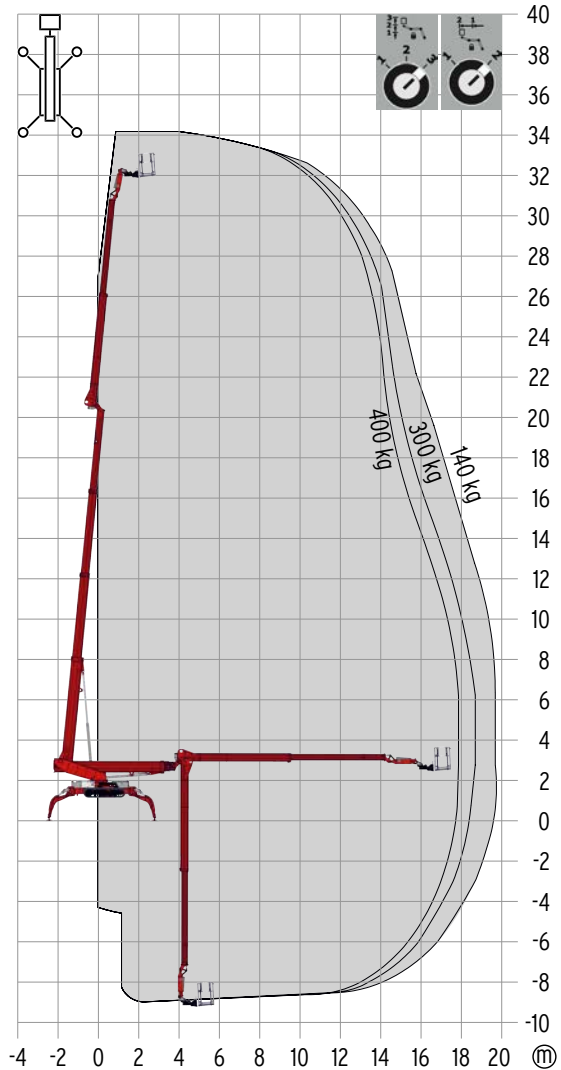
## POWER SOURCES

Standard power sources:

■ Electric motor	(country-specific 3-phases)
■ Combustion engine (Diesel)	Kubota D1305 (18,0 kW / 24,47 PS)
Fuel tank capacity (Diesel engine)	28,00 l

## POWER SUPPLY

Electric current, max.	country-specific, on request
------------------------	------------------------------



## STANDARDS

2006/42/EG-Machinery directive  
(Harmonised standard EN280:2016); 2004/108/EG (EMV);  
2000/14/EG (Noise emission directive)

\* The technical data may deviate +/- 3% from the specified values.  
\* Weight and dimensions may vary depending on options and accessories.

## CHASSIS

- Powerful track drive with hydraulic braking system
- Precise manoeuvring via sensitive remote control
- White, non-marking rubber tracks with specially arranged profile for optimal grip
- Hydraulically height- and width-adjustable crawler track drive

## STABILISATION

- Electrohydraulic stabilisation with automatic levelling and ground pressure sensor system
- Variable outrigger system with one side narrow setup option
- Outrigger pads, steel

## BOOM SYSTEM

- Boom system made of steel
- All functions available via radio remote control
- Stepless, electrical proportional control system with intuitive operation
- Robust, lockable control panel
- Parallel guided platform with electro hydraulic levelling
- 2x 220° platform rotation for additional flexibility
- Platform changing system
- Coming home and memory function - can be stored for any point on the work diagram and the point can be accessed once more at the touch of a button
- Radio control with display, two-line
- Height cut-off for boom system, 2 set points
- Horizontal outreach, selectable
- Platform capacity, selectable (300 kg / 400 kg)

## POWER SOURCE

- Electric motor (country-specific 3-phases)
- Diesel engine Kubota D1305 (18,0 kW / 24,47 PS)
- Start-stop device for combustion engine in the platform

## PRODUCTIVITY, SAFETY, QUALITY

- Hydraulic emergency lowering via electric pump
- Additional hydraulic drive for boom recovery via platform control
- Power socket in the platform (country-specific 1-phases)
- Ultrasonic sensors platform
- 2 LED headlights (drive unit)
- Detachable platform
- Drive operation without platform possible
- Lockable storage box
- Protected, internal power track for platform control
- Hydraulic system filled with biodegradable hydraulic oil
- High-quality paint in RAL 3020 (red)
- Unlockable check valves located directly on hydraulic cylinders
- Hydraulic system protected by pressure relief valves
- Hydraulic tank, emergency control, connecting cables and hoses are mounted protected
- Display in the control panel
- Additional display in the control box
- Hour meter
- Fuzzy control technology

## OPTIONS\*

- Custom paintwork, one colour, according to RAL scheme
  - (except metallic coatings, signal- or special colours)
- Custom paintwork, two colours, according to RAL scheme
  - (except metallic coatings, signal- or special colours)
- Water and air connection, platform

## ACCESSORIES\*

- Safety harness
- Track mat (2000 x 800 x 15 mm)
- 4 sliding pads (850 x 340 x 75 mm)
- Storage frame for sliding pads, lockable
- 2 protective track covers made of high-quality polypropylene fabric
- TOP
- Tree package, including
  - 4 covers, piston rod (outrigger)
  - Cover (component support)
- Lighting package:
  - 8 flashlights (outriggers)
  - 3 flashlights (turntable)
- 1 LED headlight (platform)
- Platform including platform support (900 x 800 mm)
- Platform including platform support (2000 x 800 mm)
- Lifting device (450 kg capacity)
- Copper strips, pivot point
- Platform ladder monitoring system with boom function cut-off

## CONTACT

**TEUPEN Maschinenbau GmbH**  
Marie-Curie-Str.13  
48599 Gronau  
Germany

Phone +49 2562 8161-0  
Fax +49 2562 8161-888  
E-mail mail@teupen.com

\* Weight and dimensions may vary depending on options and accessories.

Product specifications are subject to change without notice or obligation. Photographs and drawings in this document are for illustrative purposes only. Refer to the appropriate Operator's Manual for instructions on the proper use of this equipment. Failure to follow the appropriate Operator's Manual when using our equipment or to otherwise act irresponsibly may result in serious injury or death. The only warranty applicable to our equipment is the standard written warranty applicable to the particular product and sale and we make no other warranty, expressed or implied. Products and services listed may be trademarks, service marks or trade-names of TEUPEN Maschinenbau GmbH and/or its subsidiaries in the U.S.A. and many other countries. "TEUPEN", "Access redefined" and "LEO Series" are registered Trademarks of Teupen GmbH in the United States of America and many other countries. © 2020 TEUPEN Maschinenbau GmbH.



2020-B\_en

# Technical data



**TEUPEN**<sup>®</sup>  
...access redefined

since '77

## PERFORMANCE

Working height, max.	38,60 m
Platform height, max.	36,60 m
Horizontal outreach, max. (400 kg)	18,30 m
Horizontal outreach, max. (300 kg)	20,20 m
Horizontal outreach, max. (140 kg)	23,30 m
Up and over clearance, max.	21,00 m
Negativ reach, max.	13,15 m
Platform capacity, max.	400 kg
Jib, movable	200 °
Platform, rotatable	2 x 220 °
Turntable rotation, max.	450 °
To be jacked up on ground slope of	16.7 ° / 30.0 %
Track drive, height- and width-adjustable	23 / 12 cm
Gradeability, max.	16.7 ° / 30.0 %
Slope angle, max.	16.7 ° / 30.0 %
Travel speed, max.	3,0 km/h

## MEASUREMENTS\*

Platform (height) (A)	1,10 m
Platform (length) (B)	1,50 m
Platform (width) (C)	0,8 m
Length (D)	7,85 m
Length without platform (E)	7,00 m
Height (F)	1,99 m
Width, min. (G)	1,59 m
Ground clearance, max. (H)	0,40 m
Track (length x width) (I)	2,12 x 0,30 m
Outrigger footprint both side wide (length) (J)	5,31 m
Outrigger footprint both side wide (width) (K)	5,20 m
Outrigger footprint one side narrow (length) (L)	7,30 m
Outrigger footprint one side narrow (width) (M)	4,00 m
Outrigger footprint both sides narrow (width) (N)	2,70 m
Outrigger plate (length x width)	0,50 m x 0,22 m

## WEIGHT\*

Total weight	8750 kg
Live load in travelling position	6,60 kN/m <sup>2</sup>
Live load in working position	3,25 kN/m <sup>2</sup>
Point load per outrigger plate, max.	62,50 kN

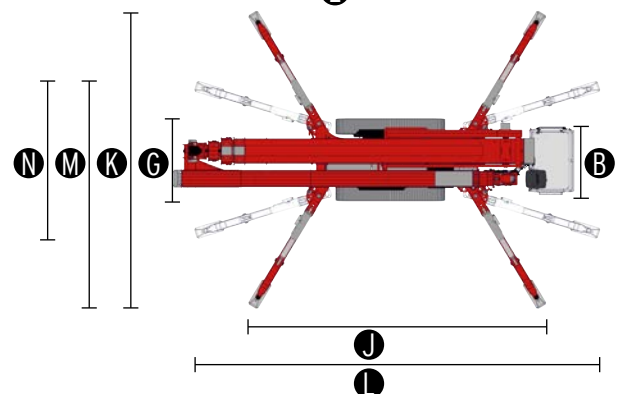
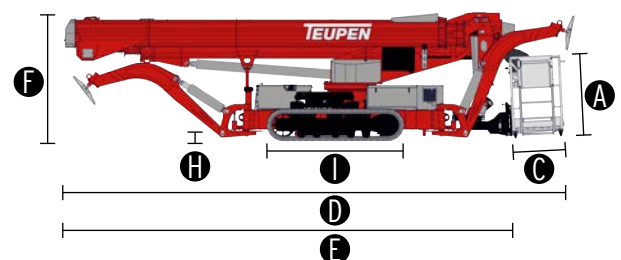
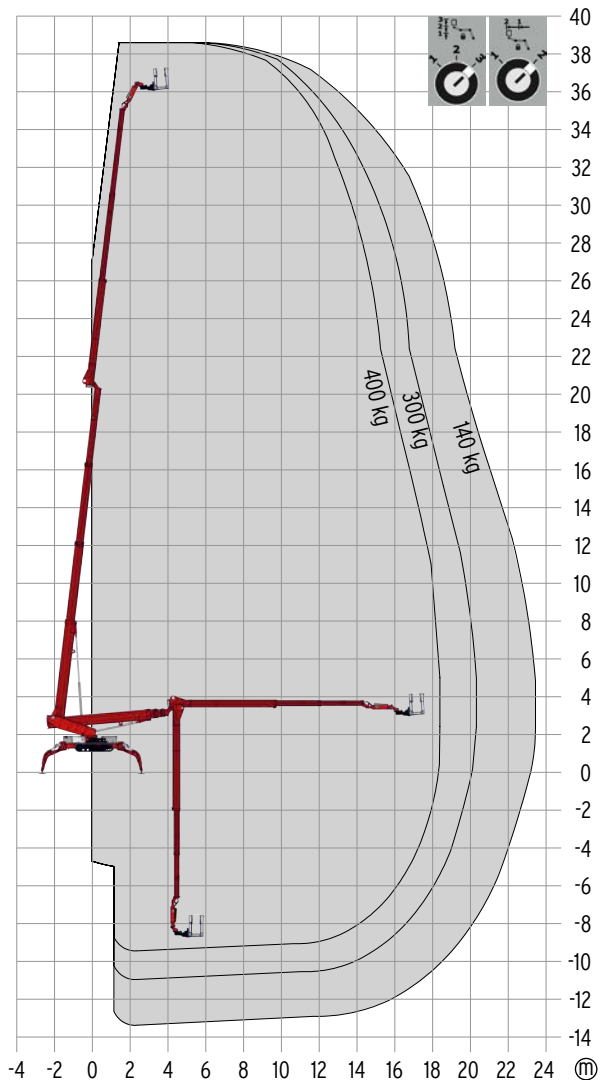
## POWER SOURCES

Standard power sources:

■ Electric motor	(country-specific 3-phases)
■ Combustion engine (Diesel)	Kubota D1305 (18,0 kW / 24,47 PS)
Fuel tank capacity (Diesel engine)	28,00 l

## POWER SUPPLY

Electric current, max.	country-specific, on request
------------------------	------------------------------



## STANDARDS

2006/42/EG-Machinery directive  
(Harmonised standard EN280:2016); 2004/108/EG (EMV);  
2000/14/EG (Noise emission directive)

\* The technical data may deviate +/- 3% from the specified values.  
\* Weight and dimensions may vary depending on options and accessories.

## CHASSIS

- Powerful track drive with hydraulic braking system
- Precise manoeuvring via sensitive remote control
- White, non-marking rubber tracks with specially arranged profile for optimal grip
- Hydraulically height- and width-adjustable crawler track drive

## STABILISATION

- Electrohydraulic stabilisation with automatic levelling and ground pressure sensor system
- Variable outrigger system with one side narrow setup option
- Outrigger pads, steel

## BOOM SYSTEM

- Boom system made of steel
- All functions available via radio remote control
- Stepless, electrical proportional control system with intuitive operation
- Robust, lockable control panel
- Parallel guided platform with electro hydraulic levelling
- 2x 220° platform rotation for additional flexibility
- Platform changing system
- Coming home and memory function - can be stored for any point on the work diagram and the point can be accessed once more at the touch of a button
- Radio control with display, two-line
- Height cut-off for boom system, 2 set points
- Horizontal outreach, selectable
- Platform capacity, selectable (300 kg / 400 kg)

## POWER SOURCE

- Electric motor (country-specific 3-phases)
- Diesel engine Kubota D1305 (18,0 kW / 24,47 PS)
- Start-stop device for combustion engine in the platform

## PRODUCTIVITY, SAFETY, QUALITY

- Hydraulic emergency lowering via electric pump
- Additional hydraulic drive for boom recovery via platform control
- Power socket in the platform (country-specific 1-phases)
- Ultrasonic sensors platform
- 2 LED headlights (drive unit)
- Detachable platform
- Drive operation without platform possible
- Lockable storage box
- Protected, internal power track for platform control
- Hydraulic system filled with biodegradable hydraulic oil
- High-quality paint in RAL 3020 (red)
- Unlockable check valves located directly on hydraulic cylinders
- Hydraulic system protected by pressure relief valves
- Hydraulic tank, emergency control, connecting cables and hoses are mounted protected
- Display in the control panel
- Additional display in the control box
- Hour meter
- Fuzzy control technology

## OPTIONS\*

- Custom paintwork, one colour, according to RAL scheme
  - (except metallic coatings, signal- or special colours)
- Custom paintwork, two colours, according to RAL scheme
  - (except metallic coatings, signal- or special colours)
- Water and air connection, platform

## ACCESSORIES\*

- Safety harness
- Track mat (2000 x 800 x 15 mm)
- 4 sliding pads (850 x 340 x 75 mm)
- Storage frame for sliding pads, lockable
- 2 protective track covers made of high-quality polypropylene fabric
- TOP
- Tree package, including
  - 4 covers, piston rod (outrigger)
  - Cover (component support)
- Lighting package:
  - 8 flashlights (outriggers)
  - 3 flashlights (turntable)
- 1 LED headlight (platform)
- Platform including platform support (900 x 800 mm)
- Platform including platform support (2000 x 800 mm)
- Lifting device (450 kg capacity)
- Copper strips, pivot point
- Platform ladder monitoring system with boom function cut-off

## CONTACT

**TEUPEN Maschinenbau GmbH**  
Marie-Curie-Str.13  
48599 Gronau  
Germany

Phone +49 2562 8161-0  
Fax +49 2562 8161-888  
E-mail mail@teupen.com

\* Weight and dimensions may vary depending on options and accessories.

Product specifications are subject to change without notice or obligation. Photographs and drawings in this document are for illustrative purposes only. Refer to the appropriate Operator's Manual for instructions on the proper use of this equipment. Failure to follow the appropriate Operator's Manual when using our equipment or to otherwise act irresponsibly may result in serious injury or death. The only warranty applicable to our equipment is the standard written warranty applicable to the particular product and sale and we make no other warranty, expressed or implied. Products and services listed may be trademarks, service marks or trade-names of TEUPEN Maschinenbau GmbH and/or its subsidiaries in the U.S.A. and many other countries. "TEUPEN", "Access redefined" and "LEO Series" are registered Trademarks of Teupen GmbH in the United States of America and many other countries. © 2020 TEUPEN Maschinenbau GmbH.



2020-B\_en



## The transport solution

TIMA Alu-Tandem trailer

With the TIMA aluminium tandem low loader, TEUPEN offers a flexible transportation option for aerial access platform models LEO13GT to LEO23T.



### LOADING WITHOUT RAMPS

Simply drive underneath the setup machine, set down tie down, done. No ramps necessary.



### LOADING WITH RAMPS

Driving on the trailer over the ramps which can be moved in width. Flat approach angle avoids tipping effect.



### PAINTED BY CHOICE

The trailer manufactured by TIMA are available in aluminium colours as standard. Also painted in colour of choice.

## Trailers at a glance

Permissible total weight	3,0 t	3,5 t
Manufacturer	TIMA	TIMA
Model	Model GTAL 280/127/3,0	Model GTAL 155/150/3,5
Own weight, empty weight	450 kg	460 kg
Payload	2.550 kg	3.040 kg
Custom paintwork available	yes	yes
Suitable for TEUPEN-models	LEO13GT, LEO15GT, LEO18GTplus	LEO21GT, LEO23GT, LEO23T

# Standard features, Options & Accessories at a glance

As equally important as the range of possible applications is the ability to personalise the lift for the actual requirements. The features and additional options for TEUPEN lifts have been developed after years of experience in action and offer the user a true plus in safety, convenience and true additional benefit.



## DRIVES

Additional to the standard dual drive of electric motor and petrol engine, many models can be fitted with a Diesel or battery drive.



## ADJUSTABLE TRACKS

Mechanically or hydraulically adjustable - not only necessary in complicated driving situations but also very practical in many everyday applications.



## NON-MARKING RUBBER TRACKS

All TEUPEN models are fitted with the TEUPEN original non-marking rubber tracks. Resistant to abrasion on delicate floor types, robust and durable.



## DETACHABLE PLATFORMS

To reduce the transport width to minimum when passing through doors or to shorten the machine for easier manoeuvring if space is limited.



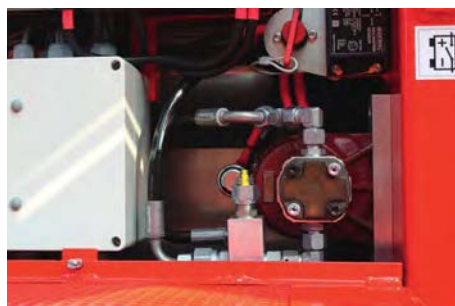
## SWITCHING PLATFORMS

For many types of application a smaller platform for one person is useful. The platform changing system makes switching the platforms easy.



## LIFTING DEVICE

The platform can be replaced with a lifting device for a crane hook to transport loads up to the maximum platform capacity.



## ELECTRIC EMERGENCY LOWERING

Additional to the standard emergency controls, the electrical emergency lowering is powered independently, therefore quicker and more comfortable.



## EXTENDED ELECTRICAL DRIVE

While using the lift with electric motor the extended drive uses an additional hydraulic pump to supply extra performance.



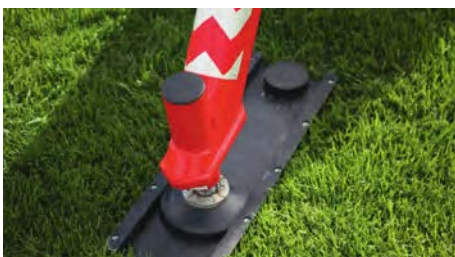
## COMING HOME FUNCTION

Exact automatic return of the boom into stowed position - at the push of a button.



- standard
- optional
- not available

	LEO12T	LEO23T	LEO30Tplus	LEO35Tplus		LEO196T	LEO156T	LEO186Tplus	LEO216T	LEO236T	LEO246T	LEO346Tplus	LEO396Tplus
<b>POWER</b>													
Petrol	○	●	●	●		●	●	●	●	●	●	●	●
Diesel	○	●	●	●		○	●	○	○	●	○	●	●
Battery	●	●	○	○		○	○	○	○	○	○	○	○
Electric drive (110V, 220V, 230V)	●	●	●	●		●	●	●	●	●	●	○	○
Electric drive (400V)	●	●	●	●		●	●	●	●	●	●	●	●
<b>Track drive</b>													
Mechanically adjustable tracks	●	●	●	●		●	○	●	●	●	●	○	○
Hydraulically adjustable tracks	●	●	●	●		●	●	○	○	○	○	●	●
<b>Platform</b>													
Detachable platform	●	●	●	●		●	●	●	●	○	●	●	●
Lifting device	●	○	○	○		○	○	○	○	○	○	○	○
Monitoring platform ladder system	●	●	○	○		●	●	○	○	○	○	○	○
<b>Control</b>													
Cable control	●	●	●	●		●	●	●	●	●	●	○	○
Radio remote control	●	●	●	●		●	●	○	○	○	○	●	●
Coming home function	●	●	●	●		●	●	○	○	○	○	●	●
Memory function	●	●	●	●		●	●	○	○	○	○	●	●
Display in the platform	●	●	●	●		●	●	○	○	○	○	○	○
<b>Additional equipment</b>													
Electric emergency lowering	●	●	●	●		●	●	○	○	○	○	●	●
<b>Options</b>													
Sliding pads	●	●	○	○		○	○	○	○	○	○	○	○
Protective cover, tracks	●	○	○	○		○	○	○	○	○	○	○	○
4 covers, piston rod (outrigger)	●	●	○	○		○	○	○	○	○	○	○	○
Tree care package	●	●	○	○		○	○	○	○	○	○	○	○
Custom paintwork, one colour	○	○	○	○		○	○	○	○	○	○	○	○
Custom paintwork, two colours	○	○	○	○		○	○	○	○	○	○	○	○
TOP	○	○	○	○		○	○	○	○	○	○	○	○
Water and air connection, platform	○	○	○	○		○	○	○	○	○	○	○	○
Platform 900 x 800	●	○	○	○		○	○	○	○	○	○	○	○
Platform 1200 x 800	●	●	●	●		○	○	○	○	○	○	○	○
Platform 1400 x 700	○	○	○	○		●	●	●	●	●	○	○	○
Platform 1500 x 800	○	○	○	○		○	○	○	○	○	○	○	○
Platform 1800 x 800	○	○	○	○		○	○	○	○	○	○	○	○
Platform 2000 x 800	○	○	○	○		○	○	○	○	○	○	○	○



### SLIDING PADS

Ensure safe setup and protect delicate floor types. Available as square single pads or as practical sliding pads.



### TRACK MATS

Serve as supporting surface when crossing curbs or thresholds and protect sensitive flooring additionally. Made from robust plastic, almost indestructible and not deformable!



### PROTECTIVE COVERS

Either one protective cover over each stabiliser cylinder or a complete set of steel covers over every damageable component (tree care package).

## NO QUALITY...

... you must be able to afford it! Because not only the purchase price is important but all costs that occur during the entire life cycle of the lift. TEUPEN offers reliable products that create long-term value.



US C



### TEUPEN - YOUR BENEFITS

#### 1. Innovation & Technology

TEUPEN products are always a good step ahead of their time! With fresh ideas from practical experience new solutions are created to the benefit of the user!

#### 2. Full range with a system

TEUPEN offers the most rich and extensive selection of straight & articulating lifts with working heights from 12 to 50 meters.

The same consistent control concept reaches across the entire series. Also the single sub-product categories are set up on the same basis and include many identical components and parts.

An unbeatable advantage for operator training and in spare parts management.

#### 3. Safe & efficient

To ensure product quality, the TEUPEN team works in accordance with current German and international codes, norms and standards.

Every component passes through a multilevel quality control process with detailed material & functional testing.

### TEUPEN - THE ORIGINAL

For over 40 years TEUPEN is the pioneer when it comes to aerial lifts on track chassis: Every detail is being developed, tested and processed in Gronau. The true Original "Made in Germany".







## ACTION INSTEAD OF REACTION

When it comes to investment decision for machinery, service is of highest importance. We support our products throughout their entire life cycle to assure maximum operational readiness

### LIFETIME

Many of our products are still in use after 25 years. Robust design, good workmanship but also good care and long-term support with spare parts contribute to longevity.



### TEUPEN - QUALITY SERVICE

#### 1. Security

With the TEUPEN inspection services you cover all legally mandatory checks. The goal is the greatest possible security for your personnel.

#### 2. Regular maintenance

A very clear goal: Equipment has to be ready for work! Regular maintenance by TEUPEN technicians or qualified TEUPEN trained technicians reduces potential for downtime and ensures the highest availability.

#### 3. Repairs

First-class service is characterized by quick and reliable repair of your lift equipment. Highly qualified mobile service technicians, our service partners and our factory workshop are always at your disposal.

#### 4. Training programs

Years of experience and knowledge only have value if they are shared: We train technicians, fleet managers and operators needs oriented and with practical orientation in our lift technology.





**TEUPEN**®  
*...access redefined*

**TEUPEN**®  
*...access redefined*

---

**TEUPEN MASCHINENBAU GMBH**  
Marie-Curie-Str. 13  
D-48599 Gronau

Tel: +49 2562 8161 0  
Fax: +49 2562 8161 888  
Mail: [mail@teupen.com](mailto:mail@teupen.com)  
Web: [www.teupen.com](http://www.teupen.com)