

TEUPEN[®]

...access redefined

LE018GTplus

Working height, max.:
18,30 m

Horizontal outreach, max.:
8,50 m

Width, min.:
0,78 m

Height:
1,99 m

Total weight:
2.450 kg

- Compact design, travels through a single door
- Light, low surface load for use on sensitive flooring
- Smooth, proportional electro-hydraulic controls
- Reliable and comprehensive safety control system
- Full height and outreach with 200 kg platform capacity
- Automatic, self leveling outriggers
- Setup on slopes up to 21 %
- Dual Power (gas and electric) for indoor and outdoor use

www.TEUPEN.com

TEUPEN Maschinenbau GmbH
phone +49 2562 8161 0
fax +49 2562 8161 888
mail@teupen.com



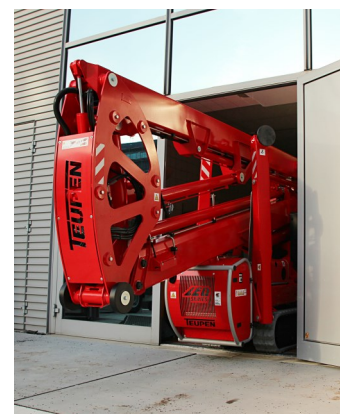
Compact tracked boom lift - LE018GTplus

Accessing jobsites at height safely and efficiently often poses unsolvable challenges to building managers. Narrow entrances, confined work areas and floor load restrictions can make the use of standard aerial lifts impossible.

With the LEO Series[®], TEUPEN offers the original tracked aerial lift in a complete range for demanding indoor and rugged outdoor applications from 12 to outstanding 50 metres working height.



LEO SERIES



LE18GTplus



The light LE018GTplus can be towed on standard trailers. With the cable remote control loading is quick and easy.



With the cable remote control the operator has a better overview when driving and setting up the lift.



The robust and fully automatic stabiliser system operates with constant ground pressure monitoring directly in the stabiliser plate.

Top Features:

- Compact** – Fits through standard single door
- Light** – Low ground pressure to protect sensitive surfaces
- Versatile** – Highest maneuverability on white rubber tracks
- Easy** – Automatic self-levelling stabilisers
- Power** – Multiple power sources for indoor and outdoor work



The detachable platform includes a power outlet and an innovative hexagonal shape for easier access to hard-to-reach places.

Technical data

LE18GTplus

TEUPEN[®]
...access redefined
since '77

PERFORMANCE

Working height, max.	18,30 m
Platform height, max.	16,30 m
Horizontal outreach, max. (200 kg)	8,50 m
Up and over clearance, max.	8,30 m
Platform capacity, max.	200 kg
Jib, movable	90 °
Turntable rotation, max.	355 °
To be jacked up on ground slope of	12,0 ° / 21,0 %
Track drive, height- and width-adjustable	8 / 16 cm
Gradeability, max.	19,7 ° / 35,5 %
Slope angle, max.	16,7 ° / 30,0 %
Travel speed, max.	1,8 km/h

MEASUREMENTS*

Platform (height) (A)	1,10 m
Platform (length) (B)	1,40 m
Platform (width) (C)	0,70 m
Length (D)	5,20 m
Length without platform (E)	4,50 m
Height (F)	1,99 m
Width, min. (G)	0,78 m
Ground clearance, max. (H)	0,25 m
Track (length x width) (I)	1,45 x 0,20 m
Outrigger footprint (length) (J)	3,31 m
Outrigger footprint (width) (K)	3,03 m
Outrigger plate Ø	0,18 m

WEIGHT*

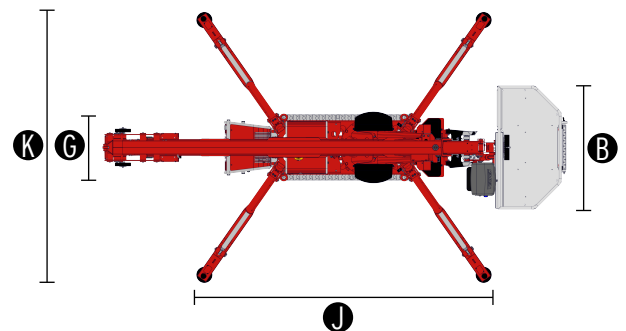
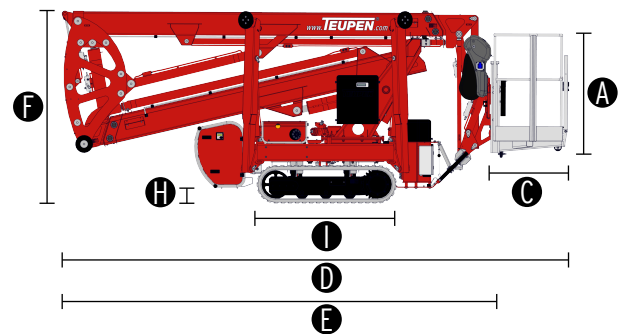
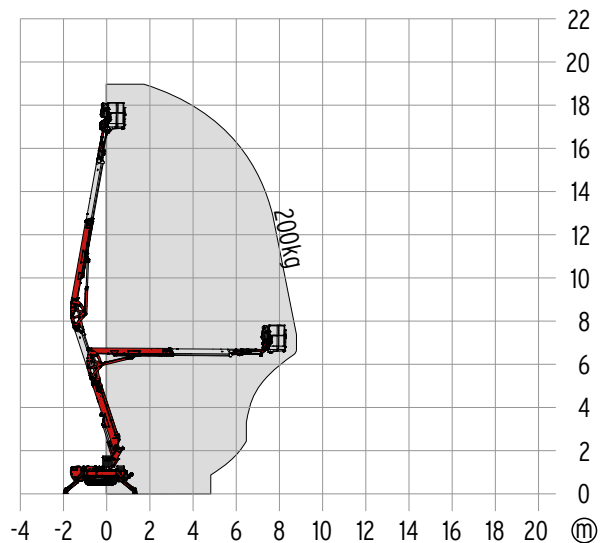
Total weight	2450 kg
Live load in travelling position	4,90 kN/m ²
Live load in working position	2,59 kN/m ²
Point load per outrigger plate, max.	17,30 kN

POWER SOURCES

Standard power sources:	
■ Electric motor	(230 V, 12,9 A, 2,2 kW)
■ Combustion engine (petrol)	Vanguard OHV 16HP (11,93 kW / 16,0 hp)
Optional power source:	
■ Combustion engine (Diesel)	Kubota Z602 (10,8 kW / 14,5 hp)
■ Battery drive (AGM)	48 V
■ Battery drive (Li-Ion)	48 V
Fuel tank capacity (petrol engine)	12,0 l
Fuel tank capacity (Diesel engine)	12,0 l

POWER SUPPLY

Electric current, max.	230 V / 16 A
------------------------	--------------



STANDARDS

2006/42/EG-Machinery directive
(Harmonised standard EN280:2001 + A2:2009); 2004/108/EG (EMV)
2000/14/EG (Noise emission directive)

* The technical data may deviate +/- 3 % from the specified values.
* Weight and dimensions may vary depending on options and accessories.

CHASSIS

- Powerful track drive with hydraulic braking system
- Precise manoeuvring via sensitive, electro hydraulic cable remote control
- White, non-marking rubber tracks with specially arranged profile for optimal grip
- Mechanically height- and width-adjustable track drive

STABILISATION

- Electrohydraulic stabilisation with automatic levelling and ground pressure sensor system
- Wear resistant, ant-friction outrigger pads

BOOM SYSTEM

- Telescopic lower and upper boom
- All functions available from the platform
- Removable cable remote control Robust, lockable control panel
- Parallel guided platform with hydraulic levelling system
- Turntable rotation via high-performance slewing ring, worm gear and hydraulic motor

POWER SOURCE

- Electric motor (230 V, 12,9 A, 2,2 kW)
- Petrol engine Vanguard OHV 16HP (11,93 kW / 16,0 hp)
- Start-stop device for combustion engine in the platform

PRODUCTIVITY, SAFETY, QUALITY

- Hydraulic emergency lowering via hand pump
- Power socket in the platform (110 V / 16 A)
- Detachable platform, including attachment point for safety harnesses
- Drive operation without platform possible
- Protected, internal power track for platform control
- Impact resistant cover over control box and control panel
- Hydraulic system filled with biodegradable hydraulic oil
- High-quality paint in RAL 3020 (red)
 - Hydraulic cylinders in RAL 9006 (grey)
- Unlockable check valves located directly on hydraulic cylinders
- Hydraulic system protected by pressure relief valves
- Hydraulic tank, emergency control, connecting cables and hoses are mounted protected
- Solid base frame with full-length forklift pockets
- Hour meter
- Fuzzy control technology

OPTIONS*

- Diesel engine Kubota Z602 (10,8 kW / 14,5 hp)
- Battery drive (AGM) 48 V including charging device
- Battery drive (Li-Ion) 48 V, including charging device
- Custom paintwork, one colour, according to RAL scheme
 - (except metallic coatings, signal- or special colours)
- Custom paintwork, two colours, according to RAL scheme
 - (except metallic coatings, signal- or special colours)
- Hydraulically height- and width-adjustable crawler track drive
- Radio remote control
- Indoor non-marking rubber tracks, with less tread depth the profile enables smooth travelling

ACCESSORIES*

- Safety harness
- 4 sliding pads (700 x 220 x 60 mm)
- Track mat (2000 x 800 x 15 mm)
- 2 protective track covers made of high-quality polypropylene fabric
- Lifting device (200 kg capacity)
 - Only in combination with mounting for lifting device
- Mounting for lifting device
- 4 covers, piston rod (outrigger)
- Tree package, including
 - Guard plate over cover (hydraulic tank)
 - Guard plate over cover (turntable)
- 2 LED headlights (combustion engine)
- 2 LED headlights (battery drive)
- TOP level 1

TRAILER

- Tandem low platform trailer (aluminium)
 - Maximum permissible weight (3,0 t)
 - Net weight (450 kg)
 - Payload (2550 kg)
- Tandem low platform trailer (aluminium)
 - Maximum permissible weight (3,0 t)
 - Net weight (440 kg)
 - Payload (2560 kg)
- Tandem low platform trailer (steel)
 - Maximum permissible weight (3,0 t)
 - Net weight (481 kg)
 - Payload (2519 kg)

CONTACT

TEUPEN Maschinenbau GmbH
Marie-Curie-Str.13
48599 Gronau
Germany

Phone +49 2562 8161-0
Fax +49 2562 8161-888
E-mail mail@teupen.com

* Weight and dimensions may vary depending on options and accessories.

Product specifications are subject to change without notice or obligation. Photographs and drawings in this document are for illustrative purposes only. Refer to the appropriate Operator's Manual for instructions on the proper use of this equipment. Failure to follow the appropriate Operator's Manual when using our equipment or to otherwise act irresponsibly may result in serious injury or death. The only warranty applicable to our equipment is the standard written warranty applicable to the particular product and sale and we make no other warranty, expressed or implied. Products and services listed may be trademarks, service marks or trade-names of TEUPEN Maschinenbau GmbH and/or its subsidiaries in the U.S.A. and many other countries. "TEUPEN", "Access redefined" and "LEO Series" are registered Trademarks of Teupen GmbH in the United States of America and many other countries. © 2018 TEUPEN Maschinenbau GmbH.

